



User Manual

W01X SMARTBOW Wallpoint

W010, W011, W012

IMPORTANT
READ CAREFULLY BEFORE USE!
KEEP THE MANUAL FOR FUTURE CONSULTATION!

© 2017 Smartbow GmbH. All rights reserved.

Smartbow GmbH

Jutogasse 3

4675 Weibern, AUSTRIA

T +43 (0) 7732 47200-0

F +43 (0) 7732 47200-91

office@smartbow.at

www.smartbow.com

Table of content

1	Introduction	5
1.1	General Information	5
1.2	Trademarks, Copyright and Disclaimer	5
2	Electromagnetic Compatibility (EMC)	7
2.1	Europe	7
2.2	TR-CU	7
2.3	USA / Canada	7
2.3.1	User Information acc. to FCC15.21	7
2.3.2	User information acc. to KDB 447498 D01 Clause 7/ RSS-102 Clause2.6	7
2.3.3	Statement acc. to RSS Gen Issue 4 Sect. 8.3	7
2.3.4	Part 15 Statement acc. FCC 15.19/RSS Gen Issue 4 Sect. 8.4	8
3	Safety	8
3.1	Safety Labels	8
3.2	Signal words and their meaning	9
3.3	Operating states	9
3.4	Electrical safety	9
3.5	Operation	10
3.6	Repair and Service	10
3.7	Transport	11
3.8	Magnetic fields	11
3.9	Waste disposal/Environmental protection	11
4	The SMARTBOW Wallpoint	12
4.1	General product information	12
4.2	Scope of supply	12
4.3	Technical Data	13
4.4	Modification on the SMARTBOW Wallpoint	17
4.5.1	General warranty conditions	17
4.5.2	Warranty coverage	17
4.5.3	Warranty exclusion	18
4.5.4	Support Hotline	18
5	Installation	19
5.1	Installation of the SMARTBOW Wallpoint	19
5.2	Mounting the SMARTBOW Wallpoint	19
5.2.1	Installation option pipe clamp	21

5.2.2	Installation option special attachment for pipe	22
5.2.3	Installation option I-beam clamp	23
6	Equipment	24
6.1	100101 Pipe clamp	24
6.2	100104 I-beam clamp	24
6.3	100105 Special attachment for pipe	24
7	Transport and storage	25
7.1	Transport	25
7.2	Storage	25
7.3	Cleaning	25
8	Troubleshooting	25
9	Waste	26
10	Support	26
11	Declaration of Conformity	27
12	Lists	30
12.1	List of figures	30
12.2	List of tables	30
13	Glossary	30
14	Revision history	31
APPENDIX A: Specification PROFINET / Industrial Ethernet		32

1 Introduction

1.1 General Information

Welcome to the SMARTBOW manual. We are happy that you have decided to buy our solution.

You will find the technical information, operating instructions and instructions for maintenance and fault elimination. Read this information carefully before operating the SMARTBOW system and make sure you are familiar with it. Non-observance may result in injury or damage to the system. If there is an unclear point or if you would like to have more information, please contact our support. Please read through the warranty conditions to know your rights and obligations.

Keep the manual within range, to be able to use it immediately.

1.2 Trademarks, Copyright and Disclaimer

SMARTBOW is a registered trademark of Smartbow GmbH.

The exclusive right of use underlies the company Smartbow GmbH. All rights reserved.

The statements contained in this publication are only for information and should not be understood as a sale offer. Certain products may not be available in some countries and the delivered products may differ from those shown in the pictures. Neither this edition nor parts of it may be copied or published by print or any other means without the written permission of Smartbow GmbH (in the following SMARTBOW).

The content of this publication has been compiled with the utmost care. Nevertheless, SMARTBOW is not liable for any damages that may arise from errors or omissions in this publication.

The German manual is the original manual. Translations into other languages are based on the German manual as a source document. SMARTBOW is not liable for discrepancies between the original German manual and versions in other languages. In case of conflicts in the content and accuracy of translated manuals, the German manual is the reference document.

The compliance to this manual as well as the conditions and methods of installation, operation, use and maintenance of the system cannot be monitored by the manufacturer. Improper installation can cause damages to material and persons. Therefore, we assume no responsibility or liability for any loss, damage or costs arising from incorrect installation, improper operation or incorrect usage and maintenance which are associated in any way.

We also assume no responsibility for patent infringements or violations of the rights of third parties arising from the use of this system.

For improvement in terms of design, operation, and/or reliability SMARTBOW reserves the right to modify the products described in this document without prior notice. SMARTBOW rejects from all liability related with the use or application of the product described here.

All SMARTBOW products have been developed to assist farmers in their daily work with their herd as good as possible. Because of variations in farm management, SMARTBOW cannot be responsible for the economic results of each individual farm.

As soon as it becomes evident that safe operation is no longer possible (e.g. if there is visible damage), remove the system immediately from power supply.

1.3 We ask for your feedback

All information of this manual has been compiled with the utmost care. The recommendations are intended as guidelines. The instructions, illustrations and specifications in this manual are based on the current information available at the time of publication. Your SMARTBOW system may contain improvements and equipment or options that are not covered in this manual. New information based on the feedback from our customers, are continuously updated and expanded.

We hope SMARTBOW fits your expectations and we like to receive your feedback (please send an email to support@smartbow.at or call +43 (0) 7732 47200-90).

The SMARTBOW Team

2 Electromagnetic Compatibility (EMC)

2.1 Europe



For additional regulatory information, see the Regulatory Compliance homepage on www.smartbow.com at the following location <https://smartbow.com/en/documents/documents-wallpoint.html>

2.2 TR-CU



The Wallpoint W01X meets the requirements of the technical regulations of customs union of Russia, Kazakhstan, Kyrgyzstan, Armenia and Belarus. The EAC sign on the type label certifies the conformity to the safety requirement of customs union.

2.3 USA / Canada

2.3.1 User Information acc. to FCC15.21

Changes or modifications not expressly approved by the party responsible for compliance could void the user's authority to operate the equipment.

2.3.2 User information acc. to KDB 447498 D01 Clause 7/ RSS-102 Clause2.6

The minimum RF Exposure test separation distance is 20 cm.

La distance minimale de séparation du test d'exposition RF est de 20 cm

2.3.3 Statement acc. to RSS Gen Issue 4 Sect. 8.3

This radio transmitter (identify the device by certification number or model number if Category II) has been approved by Industry Canada to operate with the antenna types listed below with the maximum permissible gain indicated. Antenna types not included in this list, having a gain greater than the maximum gain indicated for that type, are strictly prohibited for use with this device.

Antennas approved for use:

Number	Type	Characteristic	Plug	Frequency range (GHz)	Gain (dBi)
1	RP-SMA	Omni	male	2.4 – 2.4835	4
2	RP-SMA	Omni	male	2.4 – 2.4835	4

Ce radio-émetteur (identifier l'appareil par son numéro de certification ou son numéro de modèle s'il fait partie de la Catégorie II) a reçu l'approbation d'Industrie Canada pour un fonctionnement avec les types d'antennes listées ci-dessous, avec le gain maximum permissible indiqué. L'utilisation de types d'antennes ne figurant pas sur cette liste ou dont le gain est supérieur au gain maximum indiqué pour ce type est strictement interdite avec cet appareil.

Antennes pouvant être utilisées :

Nombre	Type	Caractéristique	Plug	Plage de fréquence (GHz)	Gain (dBi)
1	RP-SMA	Omni	male	2.4 – 2.4835	4
2	RP-SMA	Omni	male	2.4 – 2.4835	4

2.3.4 Part 15 Statement acc. FCC 15.19/RSS Gen Issue 4 Sect. 8.4





This device complies with Part 15 of the FCC Rules and with Industry Canada license-exempt RSS standard(s). Operation is subject to the following two conditions: (1) this device may not cause harmful interference, and (2) this device must accept any interference received, including interference that may cause undesired operation.

Le présent appareil est conforme aux CNR d'Industrie Canada applicables aux appareils radio exempts de licence. L'exploitation est autorisée aux deux conditions suivantes : (1) l'appareil ne doit pas produire de brouillage, et (2) l'utilisateur de l'appareil doit accepter tout brouillage radioélectrique subi, même si le brouillage est susceptible d'en compromettre le fonctionnement.

3 Safety

3.1 Safety Labels

The following safety labels are used on the different SMARTBOW products to warn against risks and dangers.

	Warning of a magnetic field
	Hazards due to batteries
	Risk of hand injury
	European-label for the separate collection of electrical and electronic appliances Further information in chapter 9 Disposal

The security labels on your product show important and useful information, which will help you to use and maintain the SMARTBOW Wallpoint safely. Follow to the instructions below to ensure that all labels remain in perfect condition and in the right place.

Make sure that the safety labels are always clean and legible. Do not use solvents, souring agents or other comparable cleaning agents which could damage the sticker.

Replace lost or illegible safety stickers.

Safety labels can be obtained from the SMARTBOW support.

3.2 Signal words and their meaning

The following signal words are used in the manual in order to warn the reader about risks and dangers.



Indicates a hazardous situation which, if not avoided, will result in death or serious injury.



Indicates a hazardous situation which, if not avoided, could result in death or serious injury



Indicates a hazardous situation, which, if not avoided, could result in minor, moderate or serious injury.



Indicates information considered important, but not hazard-related, e.g. information relating to possible property damage.

These signal words are in accordance with the standard definition for civil applications in the European Economic Area. Definitions that deviate from the standard definition may also exist in other economic areas or military applications. It is therefore essential to make sure that the signal words described here are always used just with the related product documentation and the related product. The use of signal words in connection with unrelated products or documentation can result in misinterpretation and in personal injury or material damage.

3.3 Operating states

The SMARTBOW Wallpoint may be operated only under the operating conditions and the positions specified by the manufacturer. Applicable local or national safety regulations and rules for the prevention of accidents must be observed in all work performed.

The SMARTBOW Wallpoint is exclusively produced for use in livestock sheds. Any other use is only permitted with a written permission of Smartbow GmbH.

Do not place the SMARTBOW Wallpoint on heat-generating devices such as radiators or fan heaters. The ambient temperature must not exceed the maximum temperature specified in the product documentation or in the data sheet. Product overheating can damage the Wallpoint permanently.

3.4 Electrical safety

Unless expressly permitted, never remove the cover or any part of the housing while the SMARTBOW Wallpoint is in operation. Doing so will expose circuits and components and can lead to injuries, or damage to the SMARTBOW Wallpoint.

Any object that is not designed to be placed in the openings of the housing must not be used for this purpose. Doing so can cause damage to the SMARTBOW Wallpoint.

Unless specified otherwise, the SMARTBOW Wallpoint is protected against the ingress of liquids. When the cable entry cover is opened it must be protected against penetration by liquids. If the necessary precautions are not taken the SMARTBOW Wallpoint may be damaged.

Do not use the SMARTBOW Wallpoint under adverse environmental conditions such as

- inflammable gases, vapours and solvents
- strong vibrations

An operation under the conditions described above may damage the SMARTBOW Wallpoint.

Prior to cleaning the SMARTBOW Wallpoints, disconnect it completely from the power supply (e.g. network cable). Use a soft, non-lining cloth to clean the product. Never use chemical cleaning agents such as alcohol, acetone or diluents for cellulose lacquers.

3.5 Operation

In some countries there are laws about digital positioning and tracking of people, animals and/or objects. Only the user is responsible not to violate such laws or regulations.

Before you start processing the SMARTBOW Wallpoint mechanically and/or thermally or before you disassemble it, be sure to read and pay special attention to the chapter 9 "Waste disposal".

Depending on the function, the SMARTBOW Wallpoint can produce an elevated level of electromagnetic radiation, which is within the range of the legal standards. Considering that unborn babies require increased protection, pregnant women must be protected by appropriate measures. Persons with pacemakers may also be exposed to risks from electromagnetic radiation. The employer/operator must evaluate workplaces where there is a special risk of exposure to radiation and if necessary, take measures to avoid the potential danger.

Should a fire occur, the SMARTBOW Wallpoint may release hazardous substances (gases, fluids, etc.) that can cause health problems. Therefore, suitable measures must be taken, e.g. protective masks and protective clothing must be worn.

3.6 Repair and Service

Adjustments, replacement of parts and repair may be performed only by electrical experts authorized by SMARTBOW. Only original parts may be used for replacing parts. A safety test must always be

performed after parts have been replaced (visual inspection, functional test). This helps to ensure the continued safety of the SMARTBOW Wallpoint.

3.7 Transport

The packaging of the SMARTBOW Wallpoint protects the housing from damage.

If you have to return a SMARTBOW Wallpoint to Smartbow GmbH, it should be packed so that external influences cannot cause damage to the product.

3.8 Magnetic fields

Please be aware that magnetic fields delete data media (diskettes, hard disks, USB flash drives, digital cameras, check cards, credit cards, audio and video cassettes) and can affect or destroy electronic and mechanical components, e.g. pacemaker monitors, compasses, counters, etc. In any case keep a safety distance of about 1 meter.

Do not use the magnets in locations where they are exposed to high heat (> 80°C).

Magnetic fields of permanent magnets have, according to present knowledge, no measurable positive or negative influence on people. A health risk due to the magnetic field of a permanent magnet is unlikely but cannot be completely excluded.

3.9 Waste disposal/Environmental protection

Waste electrical and electronic equipment must not be disposed of with unsorted municipal waste, but must be collected separately.

If products or their components are mechanically and/or thermally processed in a manner that goes beyond their intended use, hazardous substances (heavy-metal dust such as lead, beryllium, nickel) may be released. For this reason, the product may only be disassembled by specially trained personnel. Improper disassembly may be hazardous to your health. The national waste disposal regulations must be observed.

4 The SMARTBOW Wallpoint

4.1 General product information



Figure 1: SMARTBOW Wallpoint

The SMARTBOW Wallpoint is attached to suitable walls, poles, etc. Through radio signals the position of SMARTBOW Eartags is determined in the barn. The communication and data exchange between the SMARTBOW Eartags and the FarmServer operates via the SMARTBOW Wallpoints in the barn or outdoor area.

The SMARTBOW Wallpoint must not be repositioned by the end user; otherwise we cannot guarantee correct system behaviour. The SMARTBOW Wallpoint cover for cable entry must not be opened at any time. There are no serviceable parts inside.

ATTENTION

The screws of the cover are sensitive to too high torque (torque < 0,6Nm).

4.2 Scope of supply

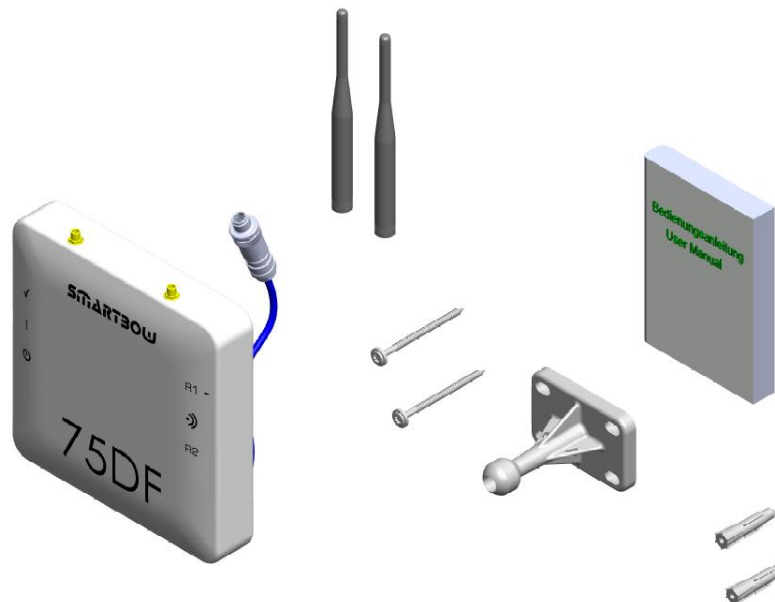


Figure 2: Scope of supply

The following items are included in the delivery of the SMARTBOW Wallpoint:

- 1 pcs. SMARTBOW Wallpoint (packed in an antistatic foil)

- 2 pcs. Omni Antennas
- 2 pcs. Chipboard screws
- 2 pcs. Dowel
- 1 pcs. Mounting bracket for SMARTBOW Wallpoint
- 1 pcs. User Manual

4.3 Technical Data

Type	SMARTBOW Wallpoint
Power supply	Power over Ethernet Class 2, 48V, IEEE 802.3af compliant
Typical indoor range (Wallpoint to Wallpoint)	500m, line of sight
Typical location accuracy	80% < 1m ¹
Location accuracy average all measurements	1,21m ²
Resolution	1cm
Operating temperature	-20 to +60°C
Storage temperature	-20°C to +70°C
Dimensions (without antennas) (l x w x h)	202x194x75mm
Weight (without antennas)	ca. 800g
Protection class	IP65

Table 1: Technical Data SAMRTBOW Wallpoint

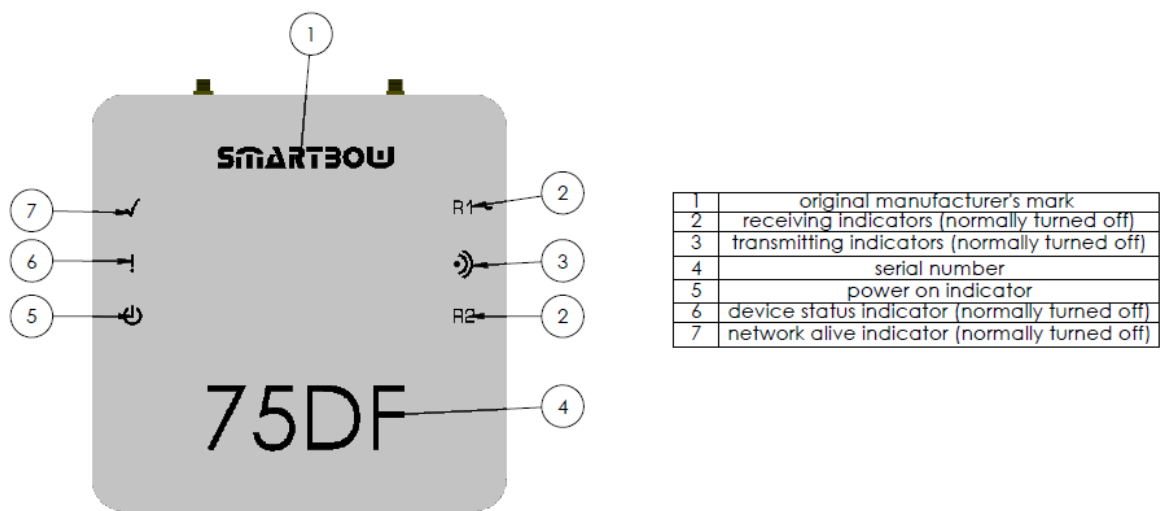
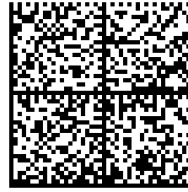


Figure 3: SMARTBOW Wallpoint labelling elements front

¹ Conditions defined by Smartbow GmbH

² Conditions defined by Smartbow GmbH

SMARTBOW



Product: Wallpoint
Model No.: W010
FCC ID: 2ADP3W010
IC: 12561A-W010
PoE: 44-57VDC IP65
Class2 (IEEE 802.3af)
MAC: 180B52000E2F

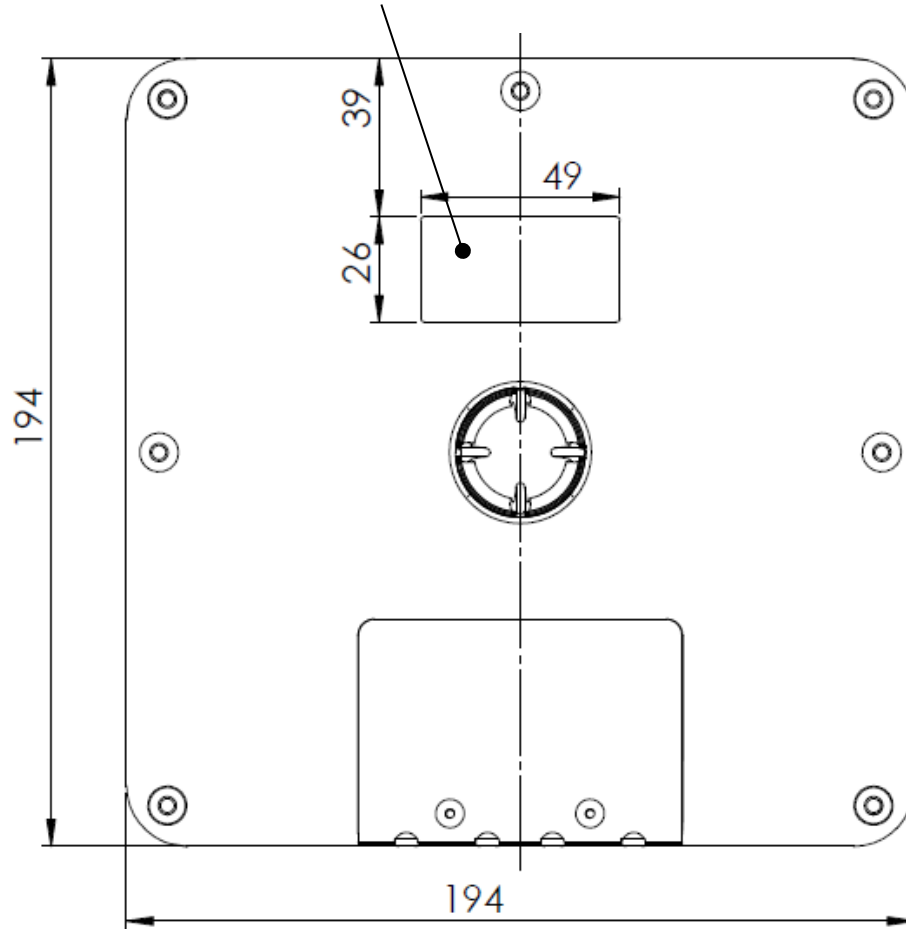
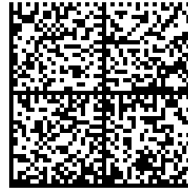


Figure 4: SMARTBOW Wallpoint W010 labelling elements rear

SMARTBOW



Product: Wallpoint
Model No.: W011
FCC ID: 2ADP3W010
IC: 12561A-W010
PoE: 44-57VDC IP65
Class2 (IEEE 802.3af)
MAC: 180B52000E2F

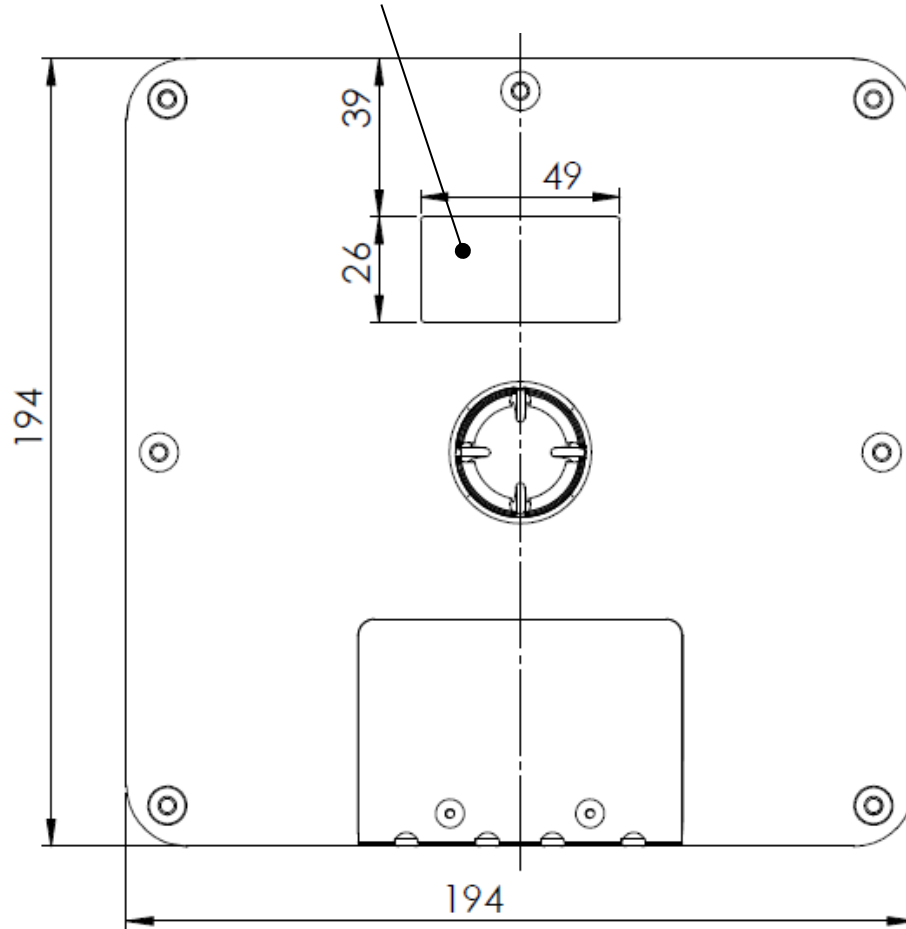
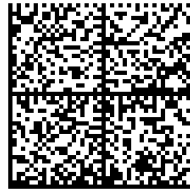


Figure 5: SMARTBOW Wallpoint W011 labelling elements rear



Product: Wallpoint
Model No.: W012
FCC ID: 2ADP3W012
IC: 12561A-W012
PoE: 44-57VDC IP65
Class2 (IEEE 802.3af)
MAC: 180B52000E2F



Изделие: приёмник
Модель №: W012
Производитель: Smartbow GmbH
Дата: 2017-09-28
PoE: 44-57 VDC IP65
класс 2 (IEEE 802.3af)

Сделано в Австрии

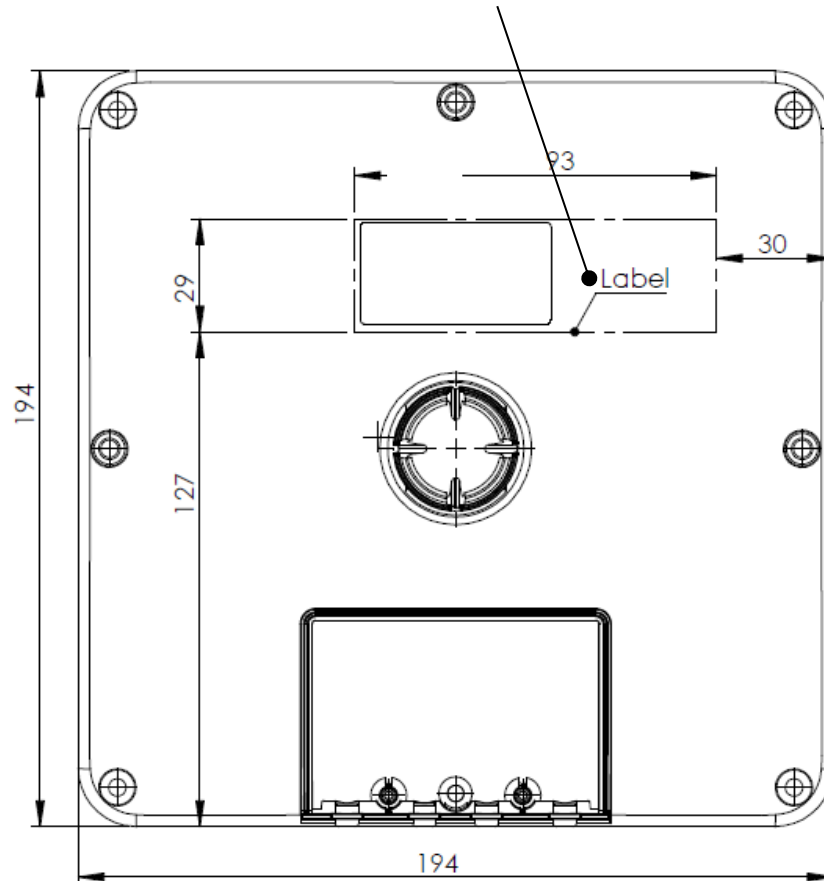


Figure 6: SMARTBOW Wallpoint W012 labelling elements rear

4.4 Modification on the SMARTBOW Wallpoint

There are no modifications on the product that need to be performed by the end user, no serviceable parts inside.

Smartbow GmbH doesn't approve any modifications on the products that are made by unauthorized persons. Modifications can have negative effects on the quality and proper function of the products of Smartbow GmbH.

4.5 General and special warranty conditions

4.5.1 General warranty conditions

These general warranty conditions apply only in connection with the general terms and conditions of sale (GTC) of Smartbow GmbH at the purchasing moment of the Wallpoint. The current version of the GTC is visible on the homepage of SMARTBOW (<http://www.smartbow.at>).

The warranty always begins on the date of transfer of the SMARTBOW Wallpoints bought from SMARTBOW or an authorized seller of SMARTBOW and refers to any material or production damage, which may occur while normal using. The warranty period is derived from the proof of purchase.

Please keep the original proof of purchase in a safe place. SMARTBOW and its authorized service partners reserve the right to refuse a warranty repair or a warranty confirmation if a proof cannot be provided.

If you have to return a SMARTBOW Wallpoint please make sure that it is packed securely.

Please send us with the SMARTBOW Wallpoint a detailed description of the problem. In order to assert your claims or before sending, please contact the SMARTBOW Support.

The SMARTBOW Wallpoint always has to be sent completely, that means with all parts from the scope of supply. An incomplete reception of shipment will delay the repair / exchange. SMARTBOW does not take over any liability for additionally sent materials, which do not belong to the original scope of supply.

This warranty does not have any effect on your existing statutory warranty claims and is subject to the laws of the country, in which the SMARTBOW Wallpoint was bought by the end customer from the authorized distributor and is valid only in this country.

4.5.2 Warranty coverage

In case of a fault in your SMARTBOW Wallpoint covered by this warranty, SMARTBOW ensures the repair or the replacement of the SMARTBOW Wallpoint. The decision whether to repair or replace the SMARTBOW Wallpoint will be made by SMARTBOW. For this reason SMARTBOW will decide if the sent SMARTBOW Wallpoint will be replaced in the same quality and function.

We assume no guarantee for expendable materials, which mean parts which must be replaced at regular intervals.

If it turns out during the repair, that it is an error that is not covered by warranty, SMARTBOW reserves the right to charge a handling fee as well as the costs for the repair (material and labour) which refers to an estimate.

4.5.3 Warranty exclusion

SMARTBOW makes no guarantees for failure and damage caused by external influences (heat, water, lightning, etc.), accidental damage, improper use, changes, alterations and extensions made on the SMARTBOW Wallpoint, use of foreign parts, neglect, improper packaging, improper storage or loss in returning the SMARTBOW Wallpoint.

This warranty is void if the defect in the SMARTBOW Wallpoints is caused by maintenance or repair, which was performed by someone else than the SMARTBOW or an authorized service partner. The warranty also void if labels or serial numbers of the SMARTBOW Wallpoints or a component of the SMARTBOW Wallpoints is changed or made illegible.

4.5.4 Support Hotline

Before returning the Wallpoint to SMARTBOW we recommend to contact us via the support hotline or by mail. You will receive further information on how you can make your claim under warranty.

The SMARTBOW support is available under support@smartbow.at or +43 (0) 7732 47200-90.

5 Installation

5.1 Installation of the SMARTBOW Wallpoint

The Wallpoint has to be installed only by SMARTBOW technicians or authorized partners. In order to do this a PROFINET cable (specification see Appendix A), without connectors, is required at the position where the SMARTBOW Wallpoint will be installed. Refer to the cabling plan provided by SMARTBOW or authorized partners for the positions where the SMARTBOW Wallpoints will be installed. The cable will be terminated and tested by the technician.



ATTENTION

It is not possible to relocate the SMARTBOW Wallpoint after installation; this can lead to undesired and unstable system behaviour.

5.2 Mounting the SMARTBOW Wallpoint

Necessary tools for installation:

- 1 pcs. cordless drill driver
- 1 pcs. TX25 bit
- 1 pcs. knife
- 1 pcs. pencil

Optional tools for installation (depending on material of wall)

- 1 pcs. impact drilling machine
- 1 pcs. 8mm impact drill

1. Use mounting bracket to mark drill pattern



Figure 7: Marking the drill pattern

Skip step 2 and 3 if you mount the SMARTBOW Wallpoint on wood.

2. Drill holes for dowels
3. Put dowels into drilled holes

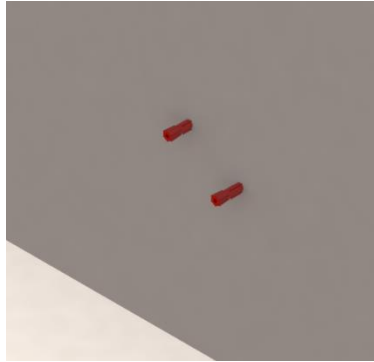


Figure 8: Dowel insertion

4. Screw the mounting bracket with provided chipboard screws



Figure 9: Screwing the mounting bracket

5. Attach the SMARTBOW Wallpoint to the mounting bracket and tighten plastic nut



Figure 10: Attaching the SMARTBOW Wallpoint to the mounting bracket

6. Remove plastic covers and attach the antennas to the SMARTBOW Wallpoint



Figure 11: Installing the antennas

7. Connect the SMARTBOW Wallpoint to the Network using both M12 connectors.



ATTENTION

Antennas that are not mounted properly can cause undesired product performance.

5.2.1 Installation option pipe clamp

Necessary tools for installation:

- 13mm wrench
1. Put the first bracket of the pipe clamp around the pipe and add the mounting bracket. Temporarily tighten the nuts by hand.

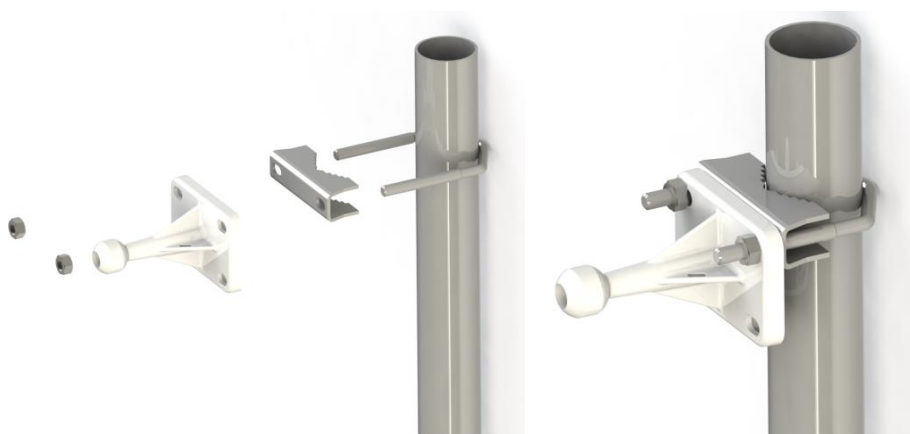


Figure 12: Mounting pipe clamp first bracket

2. Attach the second bracket of the pipe clamp

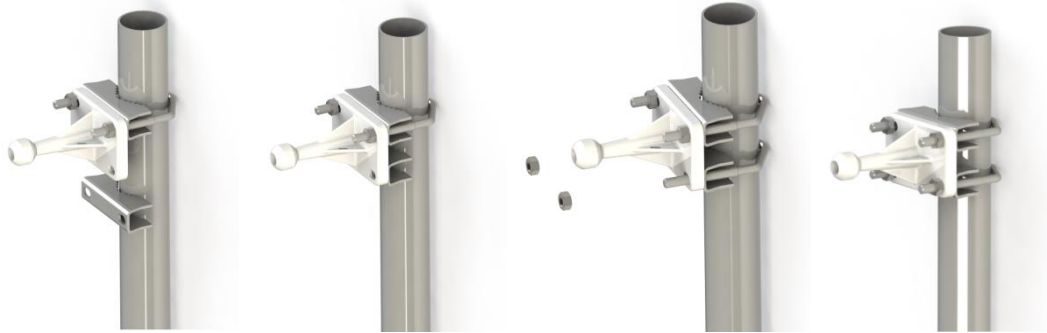


Figure 13: Mounting pipe clamp second bracket

3. Tighten the nuts using a 13mm wrench



Figure 14: Tightening the 4 nuts

5.2.2 Installation option special attachment for pipe

Necessary tools for installation:

- Slotted screwdriver or socket wrench
- Sheet-iron shears

1. Determine the necessary length of the clamp band.
2. Cut the clamp band with a sheet-iron shears to the **necessary length + min.40mm**.
3. Push one end of the clamp band ca. 40mm into the recess of the clamp.
4. Turn the one end which is guided through the recess, slightly upward.
5. Turn the other end of the strip under the housing through the rear recess up again.
6. Hook the tab of the recess in the clamp band and check the seat (pay attention to an overlap of min. 20 mm at the open end).
7. Turn around the open end down.
8. Place the clamp around the body to be fastened.
9. Screw in the free end of the clamp band in the closure.

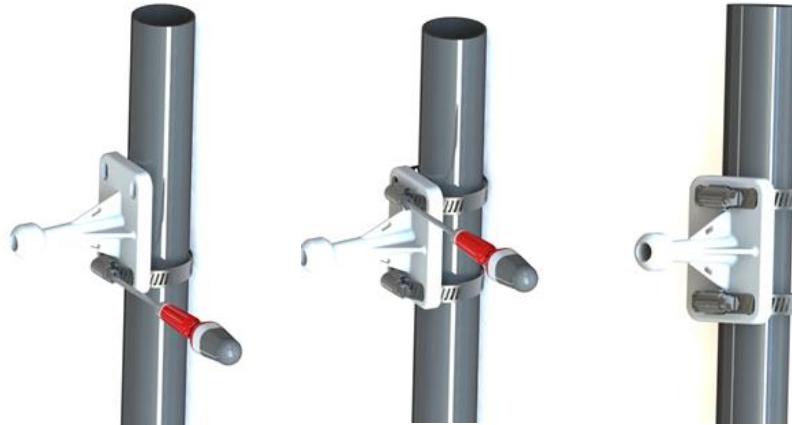


Figure 15: Installation option universal hose clamp set

10. The bent end of the tape is securely clamped between the casing and pipe.

5.2.3 Installation option I-beam clamp

Necessary tools for installation:

- 17mm wrench
- 6mm Allen key

1. Screw the I-Beam clamps onto the mounting bracket with the 2 supplied M8x20 screws by use of the 6mm Allen key.

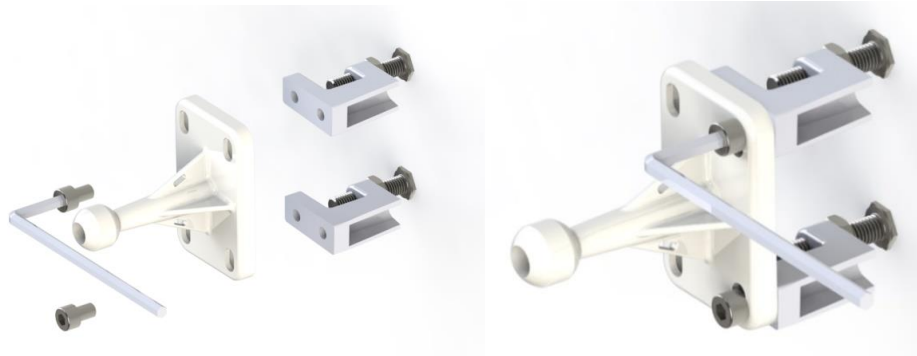


Figure 16: Screwing the I-Beam clamp onto the mounting bracket

2. Mount the clamps to the I-Beam using a 17mm wrench



Figure 17: Tightening of the 2 screws

6 Equipment

6.1 100101 Pipe clamp



Figure 18: Pipe clamp

Use the clamp holder if you mount the SMARTBOW Wallpoint to a pipe with diameters from 26-63mm (1" – 2 ½ "). There are 2 brackets per pack. For mounting instructions see point 5.2.1.

6.2 100104 I-beam clamp

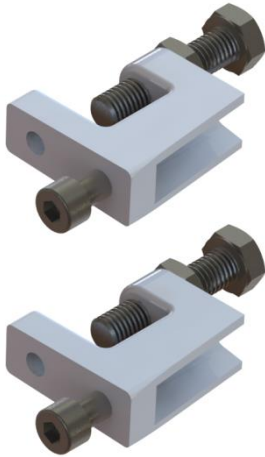


Figure 19: I-beam clamp

The I-beam is suitable for mounting the SMARTBOW Wallpoint to I-beams with flange thickness from 2 to 22mm. Larger clamps are available upon request.

6.3 100105 Special attachment for pipe



Figure 20: Special attachment for pipe

To fix the SMARTBOW Wallpoints to objects with different clamping areas, there is a set consisting of a clamp band with 3m length and 8 clamps available. The installation instructions for this special attachment for pipe can be found in Chapter 5.2.2.

7 Transport and storage

7.1 Transport

Always use the original packaging for transporting the SMARTBOW Wallpoint to avoid scratching the surface.

7.2 Storage

Store the SMARTBOW Wallpoint in dry, cool, clean surroundings. Please take care that the storage temperature range does not exceed the limits shown in chapter 4.3 Technical Data.

7.3 Cleaning



ATTENTION

Clean the SMARTBOW Wallpoint only in closed state.

Heavy soiling of the housing can be removed mechanically with a spatula. Avoid the use of sharp tools. Clean the housing with a damp cloth and mild cleaning agent. Do not use any abrasives or solvents such as alcohol, acetone, and nitro thinner. Avoid direct high pressure cleaning near the cable entries.

8 Troubleshooting

This chapter contains a list of faults and solutions.

Problem	Reason	Solution
SMARTBOW Wallpoint Power LED doesn't light	switch has no power	Check if the FarmServer, respectively the switchbox, where the SMARTBOW Wallpoint is plugged into, has power.
	faulty SMARTBOW Wallpoint	please contact the service hotline +43 (0) 773247200-90

Table 2: Troubleshooting

9 Waste

Please do your part to protect the environment by disposing used SMARTBOW Wallpoints environmentally friendly under European WEEE Directive 2002/96/EG (directive on electrical and electronic equipment), and/or national laws. Improper disposal of electronic products could have a negative impact on the environment and human health due to potentially hazardous substances.

The package contains the following materials:

- corrugated cardboard/cardboard
 - films/flat bags of polyethylene
 - adhesive tape of PVC
-
- Keep packaging materials away from children - can cause suffocation!
 - Bring the packaging to an official collection point.

Smartbow GmbH is focused on sustainability and takes over all duties of the return and disposal for EU manufacturers. Please contact your SMARTBOW service center to dispose of the product environmentally friendly. A separate collection and proper recycling of the electronic waste helps to use natural resources carefully. Your cooperation in the correct disposal of this product enables the effective use of natural resources.

10 Support

For support and customer service please do not hesitate to contact our SMARTBOW team.

Smartbow GmbH
Jutogasse 3
4675 Weibern, AUSTRIA

T +43 (0) 7732 47200-0
F +43 (0) 7732 47200-91
support@smartbow.at

www.smartbow.com

11 Declaration of Conformity



Declaration of Conformity

In accordance with the following Directives:

Directive on radio and telecommunications terminal equipment 1999/5/EG

Directive of the restriction of the use of certain hazardous substances in electrical and electronic equipment 2011/65/EU

The producer / distributor

Smartbow GmbH
4675 Weibern, Jutogasse 3, AUSTRIA
Phone: +43 (0) 7732 47200-0
Fax: +43 (0) 7732 47200-91
www.smartbow.com

declares with full responsibility that the product:

Name: SMARTBOW WALLPOINT
Type: W010

is in conformity with the regulations mentioned above – including any amendments thereto which are in force at the time of the declaration.

The following harmonized standards were applied:

EN 300328 V1.9.1	Electromagnetic compatibility and Radio spectrum Matters (ERM); Wideband transmission systems; Data transmission equipment operating in the 2,4 GHz ISM band and using wide band modulation techniques; Harmonized EN covering the essential requirements of article 3.2 of the R&TTE Directive
EN 301489-1 V1.9.2	Electromagnetic compatibility and Radio spectrum Matters (ERM); Electromagnetic Compatibility (EMC) standard for radio equipment and services; Part 1: Common technical requirements
EN 301489-17 V2.2.1	Electromagnetic compatibility and Radio spectrum Matters (ERM); Electromagnetic Compatibility (EMC) standard for radio equipment; Part 17: Specific conditions for Broadband Data Transmission Systems
EN 62311:2008	Assessment of the compliance of low power electronic and electrical equipment with the basic restrictions related to human exposure to electromagnetic fields (0 Hz to 300 GHz)
EN 60950-1:2006/A2:2013	Information technology equipment — Safety — Part 1: General requirements
EN 50581:2012	Technical documentation for the assessment of electrical and electronic products with respect to the restriction of hazardous substances

Weibern, October 2015

Place, Date

Wolfgang Auer, CEO

Figure 21: Declaration of Conformity SMARTBOW Wallpoint W010

Declaration of Conformity



In accordance with the following Directives:

- Directive 2014/53/EU on radio and telecommunications terminal equipment
- Directive 2014/30/EU relating to electromagnetic compatibility
- Directive 2011/65/EU of the restriction of the use of certain hazardous substances in electrical and electronic equipment
- Directive 2014/35/EU relating to the making available on the market of electrical equipment designed for use within certain voltage limits

The producer / distributor

Smartbow GmbH
4675 Weibern, Jutogasse 3, AUSTRIA
Phone: +43 (0) 7732 47200-0
Fax: +43 (0) 7732 47200-91
www.smartbow.at

declares with full responsibility that the product:

Name: SMARTBOW WALLPOINT
Type: W011

is in conformity with the regulations mentioned above – including any amendments thereto which are in force at the time of the declaration.

The following harmonized standards were applied:

- EN 300328 V2.1.1 Wideband transmission systems; Data transmission equipment operating in the 2,4 GHz ISM band and using wide band modulation techniques; Harmonised Standard covering the essential requirements of article 3.2 of Directive 2014/53/EU
- EN 301489-1 V2.2.0 ElectroMagnetic Compatibility (EMC) standard for radio equipment and services; Part 1: Common technical requirements; Harmonised Standard covering the essential requirements of article 3.1(b) of Directive 2014/53/EU and the essential requirements of article 6 of Directive 2014/30/EU
- EN 301489-17 V3.2.0 ElectroMagnetic Compatibility (EMC) standard for radio equipment and services- Part 17: Specific conditions for Broadband Data Transmission Systems - Harmonised Standard covering the essential requirements of article 3.1(b) of Directive 2014/53/EU
- EN 62311:2008 Assessment of the compliance of low power electronic and electrical equipment with the basic restrictions related to human exposure to electromagnetic fields (0 Hz to 300 GHz)
- EN 62368-1:2014+AC:2015 Audio/video, information and communication technology equipment — Part 1: Safety requirements
- EN 50581:2012 Technical documentation for the assessment of electrical and electronic products with respect to the restriction of hazardous substances

Weibern, October 2017

Place, Date

Wolfgang Auer, CEO

Figure 22: Declaration of Conformity SMARTBOW Wallpoint W011

Declaration of Conformity



In accordance with the following Directives:

- Directive 2014/53/EU on radio and telecommunications terminal equipment
- Directive 2014/30/EU relating to electromagnetic compatibility
- Directive 2011/65/EU of the restriction of the use of certain hazardous substances in electrical and electronic equipment
- Directive 2014/35/EU relating to the making available on the market of electrical equipment designed for use within certain voltage limits

The producer / distributor

Smartbow GmbH
4675 Weibern, Jutogasse 3, AUSTRIA
Phone: +43 (0) 7732 47200-0
Fax: +43 (0) 7732 47200-91
www.smartbow.at

declares with full responsibility that the product:

Name: SMARTBOW WALLPOINT
Type: W012

is in conformity with the regulations mentioned above – including any amendments thereto which are in force at the time of the declaration.

The following harmonized standards were applied:

- EN 300328 V2.1.1 Wideband transmission systems; Data transmission equipment operating in the 2,4 GHz ISM band and using wide band modulation techniques; Harmonised Standard covering the essential requirements of article 3.2 of Directive 2014/53/EU
- EN 301489-1 V2.2.0 ElectroMagnetic Compatibility (EMC) standard for radio equipment and services; Part 1: Common technical requirements; Harmonised Standard covering the essential requirements of article 3.1(b) of Directive 2014/53/EU and the essential requirements of article 6 of Directive 2014/30/EU
- EN 301489-17 V3.2.0 ElectroMagnetic Compatibility (EMC) standard for radio equipment and services- Part 17: Specific conditions for Broadband Data Transmission Systems - Harmonised Standard covering the essential requirements of article 3.1(b) of Directive 2014/53/EU
- EN 62311:2008 Assessment of the compliance of low power electronic and electrical equipment with the basic restrictions related to human exposure to electromagnetic fields (0 Hz to 300 GHz)
- EN 62368-1:2014+AC:2015 Audio/video, information and communication technology equipment — Part 1: Safety requirements
- EN 50581:2012 Technical documentation for the assessment of electrical and electronic products with respect to the restriction of hazardous substances

Weibern, November 2017

Place, Date

Wolfgang Auer, CEO

Figure 23: Declaration of Conformity SMARTBOW Wallpoint W012

12 Lists

12.1 List of figures

Figure 1: SMARTBOW Wallpoint	12
Figure 2: Scope of supply.....	12
Figure 3: SMARTBOW Wallpoint labelling elements front	13
Figure 4: SMARTBOW Wallpoint W010 labelling elements rear	14
Figure 5: SMARTBOW Wallpoint W011 labelling elements rear	15
Figure 6: SMARTBOW Wallpoint W012 labelling elements rear	16
Figure 7: Marking the drill pattern.....	19
Figure 8: Dowel insertion.....	20
Figure 9: Screwing the mounting bracket.....	20
Figure 10: Attaching the SMARTBOW Wallpoint to the mounting bracket	20
Figure 11: Installing the antennas	21
Figure 12: Mounting pipe clamp first bracket	21
Figure 13: Mounting pipe clamp second bracket	22
Figure 14: Tightening the 4 nuts.....	22
Figure 15: Installation option universal hose clamp set	23
Figure 16: Screwing the I-Beam clamp onto the mounting bracket	23
Figure 17: Tightening of the 2 screws	23
Figure 18: Pipe clamp	24
Figure 19: I-beam clamp	24
Figure 20: Special attachment for pipe	24
Figure 21: Declaration of Conformity SMARTBOW Wallpoint W010	27
Figure 22: Declaration of Conformity SMARTBOW Wallpoint W011	28
Figure 23: Declaration of Conformity SMARTBOW Wallpoint W012.....	29
Figure 24: Cross-section of a PROFINET Cable	32

12.2 List of tables

Table 1: Technical Data SMARTBOW Wallpoint	13
Table 2: Troubleshooting.....	25

13 Glossary

SMARTBOW Eartag	Low Power 2.4GHz ISM band transceiver sensor module which supports localization, 3-axis accelerometer and ambient temperature
SMARTBOW FarmServer	Local server at the farm for data analysis and localization

14 Revision history

Date	Version	Remark
07.12.2017	1.0	Original

APPENDIX A: Specification PROFINET / Industrial Ethernet



- Shielding: Foil and braid shielded
- Conductor cross section: 2x2xAWG22/1
- Outer Diameter: 6.5mm ± 0,2mm
- Working temperature range: -25°C.... +70°C
- Installation temperature range: -5°C... +50°C

Figure 24: Cross-section of a PROFINET Cable