

# MobiRoam SmartBox

## **USER MANUAL**

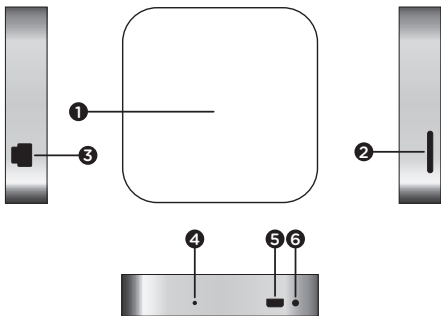
Ver 1.0

# Package Contents

## Package contains:

1. MobiRoam SmartBox
2. Power Supply  
(with interchangeable plugs)
3. LAN Cable
4. SIM Adaptor set

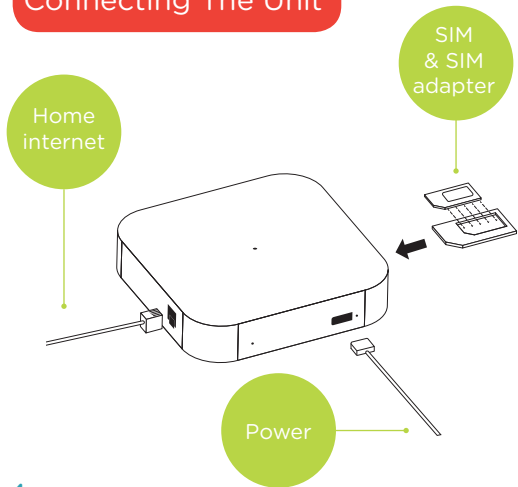
**(WARNING: Do not place unloaded SIM adaptor into the SmartBox as it may cause permanent damage to the SmartBox)**



## SMARTBOX

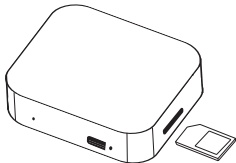
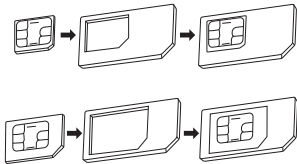
- |                  |                       |
|------------------|-----------------------|
| 1. Status LED    | 4. Reset              |
| 2. SIM Card Slot | 5. Power Port         |
| 3. LAN Port      | 6. Power On indicator |

## Connecting The Unit



# Install Sim Card

For Micro &  
Nano SIMs:  
USE SIM  
ADAPTOR.



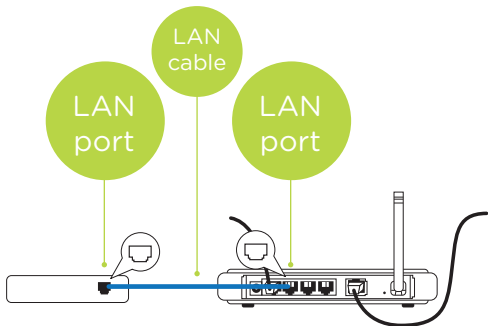
Place SIM  
into SIM  
card slot.

**WARNING: Do not place unloaded SIM adaptor into the SmartBox as it may cause permanent damage to the SmartBox)**

## Setup Instructions

1. Connect SmartBox to Home Router using LAN Cable (see page 7)
2. Connect power supply
3. GoTo:  
[www.mobiroam.com/setup](http://www.mobiroam.com/setup)





MobiRoam SmartBox

Internet Port

## Troubleshooting

[www.mobiroam.com/setup](http://www.mobiroam.com/setup)

# Specifications

**Model:** SmartBox\_PMG\_005

**Frequency:** 2100/1900/850  
Mhz

**Power Supply:** 240/110VAC.

**FCC ID :**2ADXTPMG-005

**FCC warning statement**

This device complies with  
Part 15 of the FCC Rules.

Operation is subject to the  
following two conditions:

(1) this device may not  
cause harmful interference,  
and (2) this device must  
accept any interference  
received, including  
interference that may cause  
undesired operation.

Changes or modifications  
not expressly approved  
by the party responsible  
for compliance could void  
the user's authority to  
operate the equipment.

**NOTE: THE MANUFACTURER IS  
NOT RESPONSIBLE FOR ANY  
RADIO OR TV INTERFERENCE  
CAUSED BY UNAUTHORIZED  
MODIFICATIONS TO  
THIS EQUIPMENT. SUCH  
MODIFICATIONS COULD VOID  
THE USER'S AUTHORITY TO  
OPERATE THE EQUIPMENT.**

**Made in China**



# Regulatory Notices

This section contains regulatory information for your device.

**RF Exposure** - This device complies with FCC RF radiation exposure limits set forth for an uncontrolled environment. This device and its antenna must not be co-located or operating in conjunction with any other antenna or transmitter. To comply with FCC RF exposure compliance requirements, this grant is applicable to only Mobile Configurations. The antennas

used for this transmitter must be installed to provide a separation distance of at least 20 cm from all persons and must not be co-located or operating in conjunction with any other antenna or transmitter.”

## WARNING (EMI) - United States FCC Information -:

This equipment has been tested and found to comply with the limits for a Class B digital device, pursuant to Part 15 of the FCC Rules. These limits are designed to provide reasonable protection against harmful interference in a residential installation. This equipment generates, uses and can radiate radio frequency energy and, if not installed and used in accordance with the instructions, may cause harmful interference to radio communications. However, there is no guarantee that interference will not occur in a particular installation.

If this equipment does cause harmful interference to radio or television reception, which can be determined by turning the equipment off and on, the user is encouraged to try to correct the interference by one or more of the following measures:

- Reorient or relocate the receiving antenna.
- Increase the separation between the equipment and receiver.
- Connect the equipment into an outlet on a circuit different from that to which the receiver is connected.

- Consult the dealer or an experienced radio/TV technician for help.

**CAUTION:** Any changes or modifications not expressly approved by MobiRoam could void the user's authority to operate the equipment.

[www.mobiroam.com](http://www.mobiroam.com)