

User's Manual

Pocket Theater



TO TO21COMMS

This manual contains the name of each part of RTSB7000L, how to operate it, how to connect it to a smartphone, how to set up the product, and service

Quality Warranty

All hardware products manufactured and produced by our company have been passed after strict quality control and inspection.

A. Warranty period

Body : 1 year
All accessory(Battery) : 6 months
Period of repair parts : 5 years from the date of the model release

B. Warranty contents

- In the event of failure on normal use during warranty period, we provide free of charge repair service in our Service center.
- If you switch general product to the commercially, warranty period is reduced to half.
- All components excepting main body are Consumables. (Based on full product box condition)
- In the following cases, even within the warranty period, some actual cost of repair can be charged or the repair service may be not possible at a cost.
 - 1) Usage of negligence / shock / carelessness / dropping in water
 - 2) If you disassemble or modify the product for other purposes
 - 3) Breakdown by natural disaster like fire, earthquake, flood etc.
 - 4) If the product is repaired outside of our service center
 - 5) If the product is not service guaranteed product or requested for service in outside of the service guarantee area
- Individual items that are not explicitly stated in this section are based on our service center and customer support operating principles and internal regulations, and other matters are reviewed and implemented for the convenience of end users.

C. Warranty of specific parts

- Optical Module
More than 5 defective pixels : Within warranty period (Replacement free of charge) / After warranty period (service at a cost)
We replace optical module in case of the product with defective pixels and please note that the replacement of main body or refund cannot be supported due to the defective pixel product.

- FAN MOTOR

In case of severe noise : Within warranty period (Replacement free of charge) / After warranty period (service at a cost)
We replace in case the noise exceeds the measurement noise specified by our company.
Please note that exchange of the product or refund is not supported.

D. Details on product replacement

- Application Principle
Only in case there is a reasonable reason to exchange the products on the basis of Fair Trade Act, Consumer Protection Rule and the interpretation of the Consumer Protection Authority for the same/similar cases. And, when exchanging products, only 1:1 exchange with the same model is possible. (You cannot exchange products with similar or other models)
- Note: If you apply Warranty service, you must have purchase receipt with yourself.
- Subject of Application
The products that have the history to apply warranty service 4 times and more due to the same defects during the warranty period
The products that have the history to apply warranty service 5 times and more due to the different defects during the warranty period
If the manufacturer lost the product that the consumer asked for repair, it will be exchanged or refunded.
If there are no repair parts during the period of parts retention, it will be exchanged or refunded.

Safety Notice

Please read it carefully before use.

⚠ Precautions

- "If this product is used over 20 hours continuously, power is cut off automatically to protect the system of product." This is not defective.
- Do not close/block any ventilation openings on the sides of beam projector. It causes malfunction by overheating or it can deteriorate performance.

- Do not use the projector near water or moisture. To reduce the risk of fire/electric shock, do not expose the projector to rain or moisture.
- Do not install/put/use the beam projector near heat sources such as radiators, heater, stoves or any other apparatus such as amplifiers that emit heat.
- Do not use the projector in direct sunlight.
- Do not use the beam projector in places in strong magnetic field. (Microwave, etc.). It can cause incorrect function to the product.
- Do not use the beam projector where severe contamination occurs. (Dust, etc.)
- If you do not use the beam projector for a long-term, product may be discharged. Please periodically charge every 2-3 months.
- Do not put the beam projector in mouth or do not drop it.
- If the product is exposed to moisture or humid environment, damage can occur in parts and circuits.
- Only use attachments and accessories specified by the manufacturer.
- If the exterior of the device is damaged/abused, do not use the projector.
- In case of the following conditions, damage/abuse can be happened. (They are the part of possible problems)
 - When the beam projector is dropped.
 - When the charger or plug is damaged.
 - When liquid has been spilled into the beam projector.
 - When the beam projector is disclosed to rain or humidity
 - When a foreign substance gets into the beam projector or when internal components of beam projector get loose. Do not repair personally in above situation.
- When you remove or put on the cover of the product, you may be exposed to dangerous voltage or other hazards. Before sending the product for repair, please contact your local dealer/reseller or service center.
- In case of connecting a smart phone to wireless beam projector while you are charging the smart phone, please use the genuine power charger that has genuine product certificate for your smart phone or there is a possibility of problem on the wireless data transmission by wrong noise. Or charge the projector enough and remove the charging cable before use it.
- When using the projector, please use a genuine micro USB charger that supports more than 2A. (Product package includes a micro USB charging cable.)

FCC

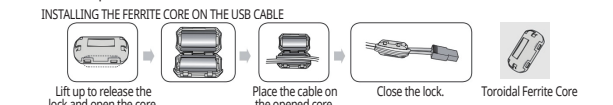
Model Name: RTSB7000L
FCC ID: 2AMJ7-RTSB7000L

This equipment has been tested and found to comply with the limits for a Class B digital device, pursuant to part 15 of the FCC Rules. These limits are designed to provide reasonable protection against harmful interference in a residential installation. This equipment generates, uses and can radiate radio frequency energy and, if not installed and used in accordance with the instructions, may cause harmful interference to radio communications. However, there is no guarantee that interference will not occur in a particular installation. If this equipment does cause harmful interference to radio or television reception, which can be determined by turning the equipment off and on, the user is encouraged to try to correct the interference by one or more of the following measures:

- Reorient or relocate the receiving antenna.
- Increase the separation between the equipment and receiver.
- Connect the equipment into an outlet on a circuit different from that to which the receiver is connected.
- Consult the dealer or an experienced radio/TV technician for help.

CAUTION : Changes or modifications not expressly approved by the party responsible for compliance could void the user's authority to operate the equipment.

This device complies with part 15 of the FCC Rules. Operation is subject to the following two conditions.
1) This device may not cause harmful interference, and
2) This device must accept any interference received, including interference that may cause undesired operation.



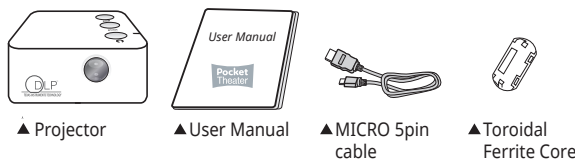
FCC RF Radiation Exposure Statement:
This equipment complies with FCC RF radiation exposure limits set forth for an uncontrolled environment. This equipment should be installed and operated with a minimum distance of 20 cm between the radiator and your body. This transmitter must not be co-located or operating in conjunction with any other antenna or transmitter.

NOTE: THE MANUFACTURER IS NOT RESPONSIBLE FOR ANY RADIO OR TV INTERFERENCE CAUSED BY UNAUTHORIZED MODIFICATIONS TO THIS EQUIPMENT. SUCH MODIFICATIONS COULD VOID THE USER'S AUTHORITY TO OPERATE THE EQUIPMENT.

Product Specification

Item	Specification	
Video (Optical engine)	Display	DLP Pico Projector, nHD (640 x 360)
	Brightness	Maximum 50 Lumens
	Source of Illumination	R, G, B LED
	Aspect Ratio / Contrast Ratio	16:9, 1000:1
	Screen Size	10 inch ~ 60 inch
	Proper Projection Distance	0.3m ~ 2.2m
	LED Life	20,000 Hours
	Color Temperature	6,900 ~ 7,200K
	Throw Ratio	1.72
	Operate Temperature	0~40℃
General	Power	DC 5V / 2.0A, Micro USB
	Size	Width 52.0mm x Length 52.0mm x Height 27.7mm Width 2 in. x Length 2 in. x Height 1 in.
	Weight	Approx. 70g (2.46oz / 0.15lbs)
	Battery	1,800mAh, Up to 1hour 50min. 7.0W (Operating) 6.7W (Charging after Power OFF)
Audio and Output	Speaker (8Ω standard)	1W, MONO MIXER Output / Signal to Noise Ratio : 90dB
	Frequency Range	20Hz ~ 20KHz
LED Display Light	DC IN	Micro USB
	No External Power	Off
	Charge completed	Green
	Battery is charging	Orange
	Low battery	Red LED flickering
	USB Charge Current Lack	Red
Radio Frequency	Update Error Recovery	Red & Green LED flickering in turn
	Range	2.4GHz, 5GHz
Software	Language	English
	Power	Power ON/OFF
Button	Function Key	Focus(Front), Focus(Rear)

Components



⚠ The component can be changed without previous notice for the quality or function improvement.

How to use

- Power on/off**
- Press and hold the 'Power button' for approximately 3-5 seconds.
 - The screen is displayed in 6~10 seconds.
 - Press and hold the Power button again for 3~5 seconds for power off.
- Adjusting focus**
- Adjust back and forth until the image on screen becomes clear.

Mode Switching

Pushing focus (front / rear) buttons simultaneously, it performs the mode-switching function between Miracast (Android) mode and DLNA (iOS) mode.

Battery Charging

- When Micro USB charger (Micro 5 pin cable) connects DC IN of the product, charging starts. (Note: Use Micro 5 pin cable that has genuine product certification.)
- The charging time takes about two hours and a bit more. (This is the case of using the genuine charger on power-off status after full discharge. Also, depending to the charger, charging time can be different.)
- ※ To reduce the influence of electromagnetic waves, use Micro 5pin cable after installing a core included in the component. Please refer to the installation of the ferrite core in FCC section of the other page.

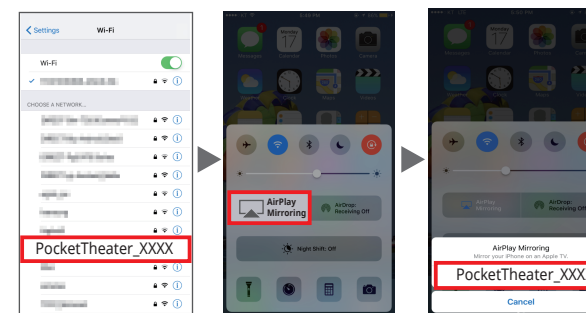
Learning Basic

- 1) Power On / Initial operating
 - Power on by pressing and holding the Power button for 3~5 seconds.
 - Please wait for a while until screen displayed in 6~10 seconds.
 - Standby mode after booting is Miracast.
- 2) Screen mode for AirPlay and waiting for connection
 - After booting, if the following image is displayed on the screen, it is a normal connection of waiting status.
- 3) Setting up smart device

⚠ For more information, please visit www.to21comms.com

Connect (iOS)

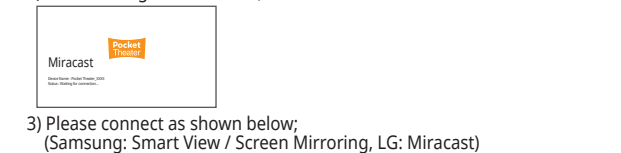
- 1) Press and hold the Power button for 3 seconds to turn on the device
- 2) After turning on the device, please select your smartphone settings
- 3) Please find the name of Smart Beam device (PocketTheater_XXXX) in Wi-Fi setting and connect.



- 4) Connect AirPlay by sliding up the scroll bar at the bottom of your iPhone.
- 5) Select AirPlay, then select 'PocketTheater_XXXX' under the device name (Be sure to select the 'Mirroring' switch for screen mirroring).
- 6) Adjust the screen size by adjusting the distance between the smart beam and the screen.
- 7) Use the Focus button (Front/Rear) right under the product Power button to adjust the focus on the screen.

Connect (Android)

- 1) Press and hold the Power button for 3 seconds to turn on the device.
- 2) After turning on the device, switch the beam mode of Miracast.



3) Please connect as shown below; (Samsung: Smart View / Screen Mirroring, LG: Miracast)

