



HyperPen USB Tablet Installation Guide





Contents

FCC Statement	3
EEC Statement	4
System Requirements	5
Contents Checklist	6
Tablet Installation	
HyperPen USB Driver.....	7
Software Installation	
Cadix CyberSign screen saver.....	10

F

CC Statement

This equipment generates and uses radio frequency energy and if not installed and used in accordance with the manufacturer's instructions, it may cause interference to radio and television reception. This equipment has been tested and certified to comply with the limits for a Class B computing device, pursuant to sub-part J of part 15 of FCC Regulation, which are designed to provide reasonable protection against such interference in a residential installation. However, there is no guarantee that interference will not occur in a particular installation. If this equipment does cause interference to radio or television reception, which can be determined by turning the equipment off and on, the user is encouraged to try to correct the interference by more of the following measures:

Reorient the receiving antenna

Relocate the computer with respect to receiver

Plug the computer into a different power outlet so that the computer and receiver are on different branch circuits.

If necessary, the user should consult with the dealer or an experienced radio/television technician for additional suggestions. The user may find the following booklet helpful, which was prepared by the Federal Communication Commission:

"How to Identify and Resolve Radio-TV Interference Problems."



EC Statement

This device complies with requirement of EEC directive 89/336/EEC with regard to Electromagnetic Compatibility.

Dieses Gerät entspricht den Anforderungen der EEC-Richtlinie 89/336/EEC für elektromagnetische Verträglichkeit.

Cet appareil est conforme aux exigences de la directive de la Communauté européenne 89/336/EEC sur la compatibilité électromagnétique.

Questo apparecchio è conforme alla direttiva comunitaria 89/336/CEE relativa alla compatibilità elettromagnetica.

Este dispositivo cumple con los requerimientos de la normativa de la CEE 89/336/EEC en lo referente a Compatibilidad Electromagnética.

S

System Requirements

- IBM compatible PC with 200MHz Pentium processor or higher
- An available USB port
- Microsoft Windows 98
- 32MB RAM
- CD-ROM Drive
- Color monitor



Contents Checklist

1



USB TABLET

2



PEN

3



APPLICATION / DRIVER CD

T-ablet Installation

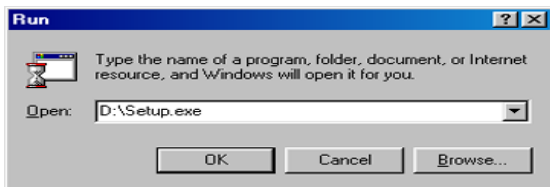
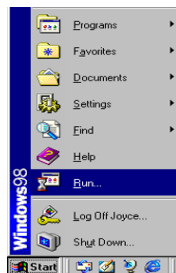
HyperPen USB Driver

*For the fastest and easiest installation of the HyperPen tablet, we recommend **NOT TO connect your USB tablet until prompted to do so by the HyperPen driver installation**. The HyperPen is also supported by Plug and Play.

- 1 Begin by inserting the autorun installation CD. The following screen appears(Step2).

OR

If the screen in step 2 does not appear, click **Start** and choose **Run**.



In the **Run** dialog box, type "**d**" or where your CD drive is located and click **OK**.

2



The screen appears.

3



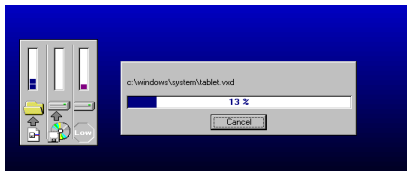
Click the *HyperPen USB Driver* icon .

4



The welcome screen appears, click “*Next*”.

5



The driver files will begin to install to the proper location.

6



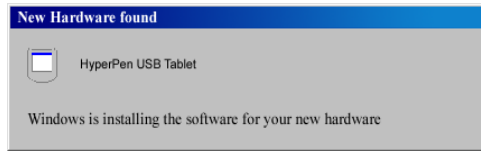
Installation will prompt you to plug in your USB tablet.

7



Connect the tablet's USB connector into an available USB port on your computer.

8



Windows will detect your newly installed Aiptek HyperPen USB tablet and will proceed with the final steps of the installation.

You have now successfully installed your HyperPen USB tablet.

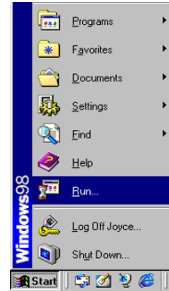


Cadix CyberSign

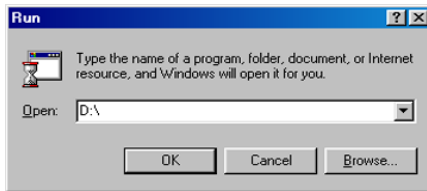
- 1 Begin by inserting the autorun installation CD. The following screen appears(Step2).

OR

If the following screen does not appear, click **Start** and choose **Run**.



In the **Run** dialog box, type "**d:**" where drive is your CD drive and click **OK**. Then choose **Setup** icon.



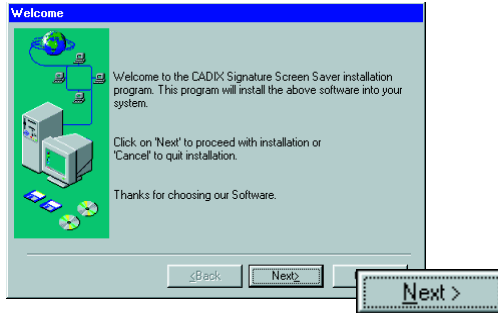
- 2 The screen below appears.



- 3 Click the **Cadix Signature** icon.



4



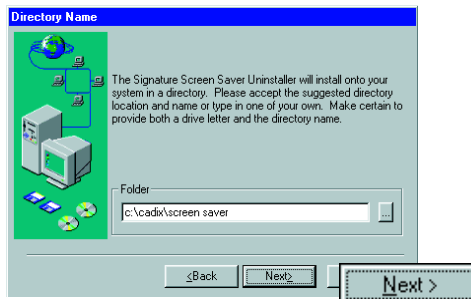
A Welcome dialog box appears. Click **“Next”** to start the installation.

5



Choose the tablet you have installed. Click **“Next”**.

6



Select the directory where you would like Cadix to be installed , or accept the suggested directory. Click **“Next”**.

7



You can set the Cadix as the default screen saver and click “**Yes**”, or click “**No**” to continue.

You will see a **Done!** dialog box. Now the installation is complete!



Continue to install the rest of the software provided on the CD. Click on the icon of the program you wish to install and follow the on-screen instructions.