

EXHIBIT C

User Manual

4-Port detachable USB Hub

PCUH411

Owner's manual

Bedienungsanleitung

Mode d'emploi

Istruzioni per l'uso

Gebruiksaanwijzing

Instrucciones de manejo



Let's make things better.



PHILIPS



PHILIPS

FCC Statement

FCC Class B Radio Frequency Interference Statement

Note:

This equipment has been tested and found to comply with the limits for a Class B digital device, pursuant to part 15 of FCC Rules. These limits are designed to provide reasonable protection against harmful interference in a residential installation. This equipment generates, uses, and can radiate radio frequency energy and, if not installed and used in accordance with the instructions, may cause harmful interference to radio communications. However, there is no guarantee that interference will not occur in a particular installation. If this equipment does cause harmful interference to radio or television reception, which can be determined by turning the equipment off and on, the user is encouraged to try to correct the interference by one or more of the following measures:

1. Reorient or relocate the receiving antenna.
2. Increase the separation between the equipment and receiver.
3. Connect the equipment into an outlet on a circuit different from that to which the receiver is connected.



PHILIPS

4. Consult the dealer or an experienced radio/television technician for help.

Note 1:

The changes or modifications not expressly approved by the party responsible for compliance could void the user's authority to operate the equipment.

Note 2:

Shielded interface cables, if any, must be used in order to comply with emission limits.

CE Declaration of conformity

The USB Hub is in conformity with EUROPEAN STANDARD EN 55022/A1 Class B, and EN 50082-1 (IEC 801-2, IEC 801-3, IEC 801-4).



PHILIPS

Table of Contents

1. About this product	1
1.1. Package Contents	1
1.2. Features	1
1.3. Identification	1
2. Installation	2
2.1. Placement	2
2.2. Adaptation	2
2.3. Power Connection	3
2.4. USB Connection	4
2.5. Setup	4
3. Trouble Shooting	5



PHILIPS

1. About this product

1.1 Package Contents

Each package should include the following parts :

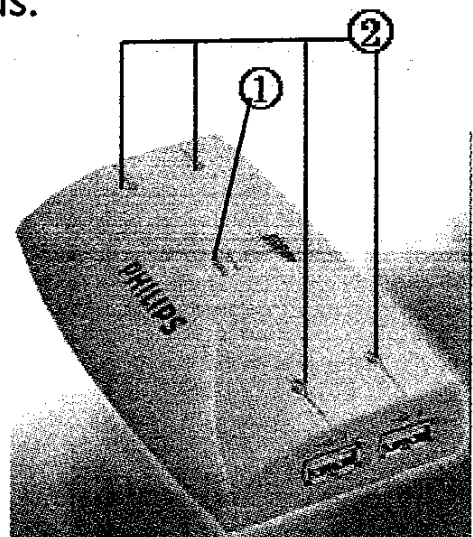
- 1 USB 4-port Clip-On HUB
- 1 USB cable
- 1 Switching AC Adapter
- 1 Owner's manual

1.2 Features

- Fulfill the USB-IF Specification Revision 1.1 and HID Class Definition Rev.1.0.
- Support up to 127 USB devices simultaneously.
- Stand-alone or clip-on to Philips 1999/2000 CRT monitor range.
- Support for realtime dynamic insertion and removal.
- 1 Upstream port and 4 Downstream ports.
- Over current protection on all downstream ports.
- Self-powered by using the supplied AC Adapter or Bus-powered through USB bus.

1.3 Identification

1. Power LED: Red light is lit when power is supplied.
2. LEDs: Green light is lit for each of the ports when they are connected and active.
3. Down Stream Ports: 4 USB A-type receptacles on both sides connect to USB devices.

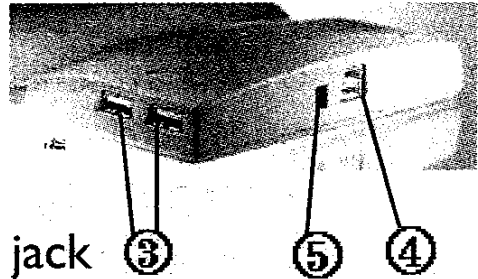




PHILIPS

4. Up Stream Port
1 USB B-type receptacle to connect to the PC.

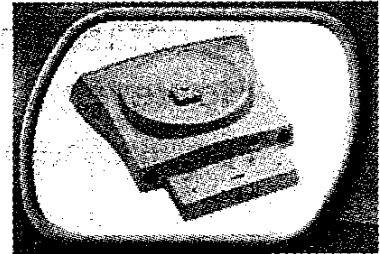
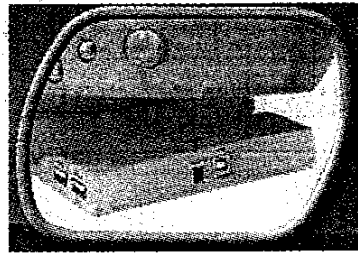
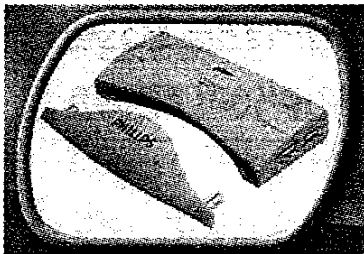
5. Power Socket
For the supplied AC Adapter jack to connect to.



2. Installation

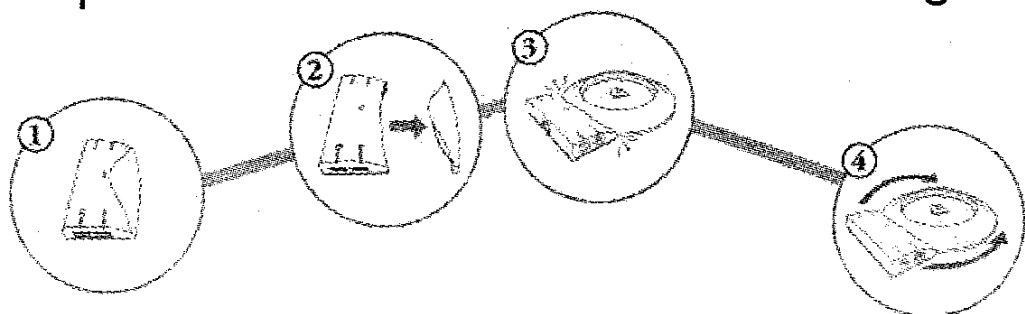
2.1 Placement

The placement of this hub can be either clipping on the pedestal or multimedia base of the Philips 1999/2000 CRT monitor range or standing alone to the PC.



2.2 Adaptation

This Hub consists of two parts: functional and aesthetic. The aesthetic element is a removable cover. To remove the cover, simply by pulling it apart from the main body, the Hub can be attached to the base or pedestal of any the new products in 1999/2000 CRT monitor range.





PHILIPS

☞ For Philips pedestals:

The new attachable USB Hub can be rotated to any position around the monitor's base (see graph 3 & 4). This accommodates users who prefer to connect USB peripherals like keyboards, joysticks and mice conveniently in the front of their monitor, as well as those who opt for Hub connections at the rear of the monitor. If requirements changed, the hub position can be repositioned at any time to concur changing needs.

☞ For Philips Multimedia Base:

A slot for this hub to install in can be found in the back of the Multimedia Base. Simply insert the hub straight into the slot until a click sound is heard. The hub can't be rotated nor repositioned with Multimedia Base; However, it retains the advantage of minimal space requirement.

2.3 Power connection

- It is recommended that the AC adapter be plugged into the electrical outlet before the hub.
- It is recommended that the AC adapter is used at all time for high-speed devices and multiple devices may cause a power shortage in the hub.
- It is recommended that the AC adapter be used whenever multiple hubs in a stacking configuration.
- Do not remove the AC adapter while the hub is working.



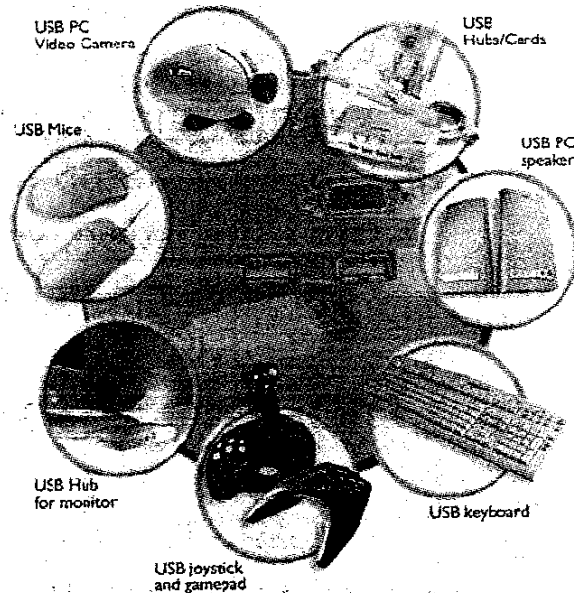
PHILIPS

2.4 USB connection

1. USB devices

This hub can be connected or disconnected to your PC when the computers up and running programs, by using any USB port on your computer.

This product allows your computer to interface with various USB devices.

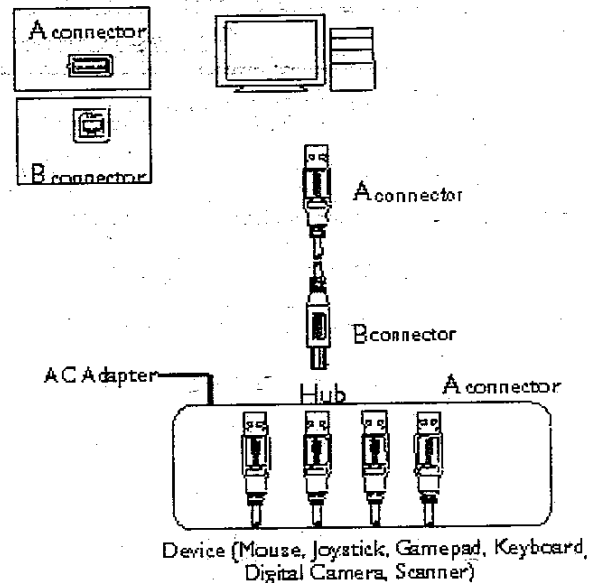


2. A & B type connector

Insert A connector into the down stream port on the PC or this hub.

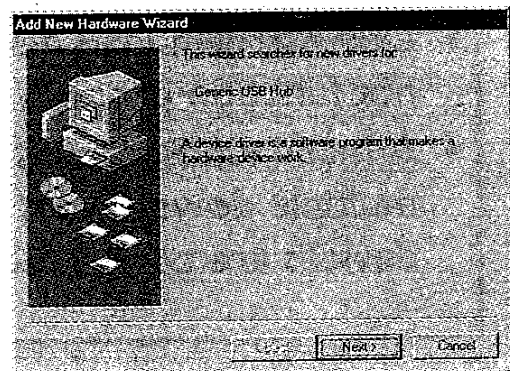
Insert B connector into the up stream port of this hub or other USB devices.

Make sure that those all the way into the socket and is firmly connected.



2.5 Setup

- When connecting this hub for the first time, a message of "Searching for unknown hardware device, searching software for installation"

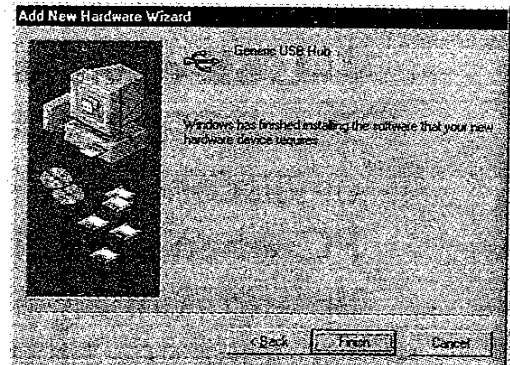




PHILIPS

will appear.

- Your computer will then start up the Device Driver Wizard, and install the hub.
- Once the setup has finished the installation, you can connect USB devices to it.



4. Trouble Shooting

Please refer to the following list of common problems encountered and possible causes. Please contact the vendor you purchased from for any problem not listed below.

Problem(s)	Possible Cause(s)
<ul style="list-style-type: none"> • Hub cannot be recognized. • Displays a “!” mark on the Hub item in Device Manager. • Something other than “Common USB Hub” is showed in the Device Manager. 	<ul style="list-style-type: none"> • One or all of the connections are not firmly in the place and properly connected.
<ul style="list-style-type: none"> • Red Power LED is not lit. 	<ul style="list-style-type: none"> • The AC adapter is not properly connected.
<ul style="list-style-type: none"> • Green LED light is not lit when port is connected to device. 	<ul style="list-style-type: none"> • The connection is not firmly in place.
<ul style="list-style-type: none"> • Downstream USB device does not function properly. 	<ul style="list-style-type: none"> • The downstream USB device is malfunctioning.
<ul style="list-style-type: none"> • A malfunction occurs when multiple downstream USB devices are connected. 	<ul style="list-style-type: none"> • A particular USB device does not support multiple devices. Please consult that device’s operating manual.