

Copyright © 2007 by Verathon, Inc. All rights reserved. No part of this *User's Manual* may be copied or transmitted by any method without the express written consent of Verathon, Inc..

FloPoint[®], ScanPoint[®], QuickPrint[®], Sontac[®], VMODE[®], Verathon[®] and Verathon Medical[®] are registered trademarks, and Premium Warranty - Total Customer CareSM Plan is a service mark of Verathon, Inc..

Adobe[®], Acrobat[®], and Reader[®] are registered trademarks of Adobe Systems Incorporated in the United States and/or other countries.

Apple[®] and Macintosh[®] are registered trademarks of Apple Incorporated in the United States and/or other countries.

Microsoft[®], Internet Explorer[®], Windows[®], and .NET Framework[®] are registered trademarks of Microsoft Corporation in the United States and/or other countries.

All other brand and product names are trademarks or registered trademarks of their respective owners.

The ScanPoint[®] technology described in this manual is protected by U.S. Patent 6,569,097. Other international patents pending.

Information in this *User's Manual* may change at any time without notice. For the most up-to-date information, you can access an online version of this manual at <http://www.verathon.com/manuals.htm>. Examples described or illustrated in this *User's Manual* are fictitious and do not in any way represent real patient or exam data.

Verathon, Inc. Corporate HQ: (US and Canada)

20001 North Creek Parkway
Bothell, WA 98011
USA
800.331.2313 (Canada and US)
425.867.1348
Fax: 425.883.2896

Verathon Medical (Japan) K.K.

Executive Tower Azabudai 7F
1-4-3 Azabudai
Minato-ku
Tokyo, Japan 106-0041
+81.03.3560.3501
Fax: +81.03.3560.3502

EC Rep

Verathon Medical (Europe) B.V.

Boerhaaveweg 1
3401 MN IJsselstein
The Netherlands
+31.30.68.70.570
Fax: +31.30.68.70.512

Verathon Medical (United Kingdom) Ltd.

The Granary Manor Farm Courtyard
Aston Sandford, Aylesbury
Buckinghamshire, HP17 8JB
United Kingdom
+44.1844.299.207
Fax: +44.1844.299.218

Verathon Medical (France) Sarl

Office Address:

Espace Europeen de l'Entreprise
2 allée d'Oslo
67300 Schiltigheim
France
+33.03.88.60.14.12
Fax: +33.03.88.60.46.87

Postal Address:

BP 10039
F-67012 Strasbourg Cedex
France



Table of Contents

Important Information	13
Product Description	13
Intended Use Warnings and Cautions.....	13
Statement of Prescription	13
Statement of Intended Use	13
Contraindications	14
Introducing the FloPoint® Elite Uroflow System	16
Product Description	16
FloPoint® Elite Uroflow System Parts and Features.....	16
ScanPoint® Label Writer (Optional Printer)	17
ScanPoint® Online	18
ScanPoint® Premium Warranty Total Customer Care SM Plan	19
Getting Started	20
Required Equipment.....	20
Getting Started	20
Step 1: Unpack the Box and Check the Components.....	21
ScanPoint® Label Writer	24
Step 2: Attach the Mounting Bracket to the wall and attach the FloCharger to the mounting bracket. ...	25
Step 3: Installing Adobe® Acrobat® Reader.....	26
Step 4: Install ScanPoint® with QuickPrint	26
Installing ScanPoint® with QuickPrint Software	27
Step 5: Setting ScanPoint® User Preferences.....	33
About User Profiles	38
Step 6: Installing FloPoint® Elite Devices	39
Installing the ScanPoint® Docking Station	39
Setting up the ScanPoint® Label Writer	42
Connecting the Label Writer to Power	42
Installing a Roll of Labels	42
Connect the Label Writer to Your Computer	44
Step 7: Charge the Batteries	44
Charging the ScanPoint® Remote Battery	44
Charging the FloSensor Battery	45
Displays, Controls, and Indicators	46
ScanPoint® Remote Display Icons	46
ScanPoint® Remote Buttons.....	48

ScanPoint® Remote Audio Cues	48
FloSensor Indicators.....	49
FloCharger Indicators	50
Performing an Exam	51
Preparing for the Exam.....	51
Performing an Exam.....	51
Recording a Voice Annotation.....	54
Cleaning and Maintenance.....	55
FloSensor Cleaning Procedures	55
Quick Clean Procedure.....	55
Solid Material Cleaning Procedure	56
FloCharger Cleaning Procedure.....	57
ScanPoint® Remote Cleaning Procedure.....	57
Label Writer Cleaning and Maintenance	57
Cleaning the Exterior and Interior of Your Printer.....	57
Regular Inspections and Maintenance	58
Weekly Inspections	58
Repairing FloPoint® Elite Devices	58
Device Disposal.....	58
Managing Exam Results in ScanPoint® with QuickPrint	59
Starting ScanPoint® with QuickPrint.....	59
ScanPoint® with QuickPrint Windows Icons	59
Using Multiple ScanPoint® Docking Stations	60
The Message Indicator	60
Completing an Unannotated Exam	60
If You Did Not Enter a Voice Annotation	60
Reprinting an Exam	62
To Reprint the Most Recent Exam Results	63
Completing a Voice-Annotated Exam	63
Viewing Exam Results in ScanPoint® Online	66
Starting ScanPoint® Online.....	66
Viewing Exam Results	66
Viewing Past Exams	68
FloPoint® Elite Reports in ScanPoint® with QuickPrint.....	69
Report Type Samples.....	71
Changing Your Preferences	77
Exiting QuickPrint or Hiding the QuickPrint Window	80

Closing the QuickPrint Window without Closing ScanPoint®	80
To Exit QuickPrint Completely	80
Calibration.....	81
Determining the Number of Days Until Required Calibration.....	81
Calibrating the FloSensor using ScanPoint® with QuickPrint.....	83
If the Calibration was Successful.....	84
If the Calibration was Unsuccessful.....	84
Completing Calibration	84
Troubleshooting.....	86
Help Resources	86
Diagnosing Problems	88
ScanPoint® Problems.....	88
ScanPoint® Remote Problems.....	89
Error Messages.....	90
Error Codes.....	91
Application Log	92
Warranty.....	94
Disclaimer of Additional Warranties	94
Contacting Verathon®	95
Clinical Application.....	96
Definitions, Indications, and Output.....	96
Definitions	96
Indications.....	96
Clinical Condition or History Suggestive Of:	96
Specific Signs and Symptoms:.....	96
FloPoint® Elite Output	96
FloPoint® Interpretation	97
Limitations and Specific Clinical Applications.....	97
Quantitative Measurements.....	97
Flow Rates	97
Measurements Related to FloPoint® Elite Curve Patterns	99
Continuous/Regular Patterns:.....	99
Irregular Patterns	101
Clinical Significance	102
Artifactual Causes.....	102
Using Flow Time and Voiding Time to Help Identify the Curve Pattern	103

Summary of Diagnostic Significance	103
Artifacts and Pitfalls	104
“Spikes” or Rapid Fluctuations in the Curve	104
Low and High Voided Volumes	105
Test Technique	106
Reimbursement Information	106
Physician Participation Requirement	106
Procedure Codes	106
Diagnosis Codes	106
REFERENCES	108
Parts and Accessories.....	109
FloPoint® Elite Uroflow System Components.....	109
FloPoint® Elite Uroflow System Accessories.....	110
Other FloPoint® Elite Uroflow System Accessories.....	112
Specifications.....	114
Symbol Directory	114
Standards and Regulations Compliance	114
Electromagnetic Effects	115
Health Insurance Portability and Accountability Act	116
FloCharger.....	116
FloSensor	117
ScanPoint® Remote.....	117
ScanPoint® Docking Station	117
Accuracy Specifications.....	118
Operating Conditions.....	118
Storage Conditions	119
Radio Specifications	119
Computer Hardware and Software Requirements	119
Operating System and Software Requirements	120
Label Writer Specifications.....	120
Mounting Bracket and Related Equipment Specifications	121
Glossary	122

Table of Figures

Figure 1. FloPoint® Elite Uroflow System Components and Features.....	16
Figure 2. ScanPoint® Label Writer Parts and Features.....	18
Figure 3. The ScanPoint® Docking Station has a USB Connector.	39
Figure 4. Connecting the ScanPoint® Printer to Power.....	42
Figure 5. Loading a Roll of Labels on the Spool Spindle.....	43
Figure 6. Inserting a Label into the Label Feed Slot.....	44
Figure 7. ScanPoint® Remote Battery Icon.....	45
Figure 8. FloSensor Components.....	56
Figure 9. QuickPrint Window with Status Box and Message Icon.....	59
Figure 10. Patient Detail Dialog.....	61
Figure 11. New Exams Results Window.....	64
Figure 12. New Exam Results Dialog.....	64
Figure 13. Patient details added to an exam record.....	65
Figure 14. New Exam Results Page.....	67
Figure 15. Exam Details Page.....	67
Figure 16. New Exam Results.....	68
Figure 17. Patient Exams History screen - Search by Patient ID.....	69
Figure 18. Patient Exams History Search Results.....	69
Figure 19. ScanPoint® Online Detail Report.....	72
Figure 20. ScanPoint® Online Detail Report Preview.....	73
Figure 21. ScanPoint® Online Summary Report Preview.....	74
Figure 22. QuickPrint Full Page Detail Report.....	75
Figure 23. Quick Print Full Page Summary Report.....	76
Figure 24. QuickPrint Detail Label Report.....	76
Figure 25. QuickPrint Summary Label Report.....	77
Figure 26. FloPoint® Elite Calibration Fluid and Calibration Quick Reference Card.....	81
Figure 27. ScanPoint® Calibration Warning Message.....	82
Figure 28. Instrument Details Dialog.....	83
Figure 29. Calibration Report.....	85
Figure 30. ScanPoint® Diagnostics.....	87
Figure 31. Application Log Request.....	93
Figure 32. Application Log Data.....	93

Figure 33. Measurements Taken From the FloPoint® Elite Curve A. Measurements of the continuous uroflow curve. Average flow rate (not shown) is calculated by divided total volume voided by flow time. B. Measurements of flow time and voiding time from an intermittent uroflow curve.....	98
Figure 34. Normal Uroflow Curve	100
Figure 35. Superflow Pattern	100
Figure 36. "Flat Top" Obstructive Flow Pattern The peak on the spike at the end of the trace might have been misinterpreted by the uroflowmetry as the peak flow.....	101
Figure 37. Rounded Top Obstructive Flow Pattern	101
Figure 38. Fluctuating Pattern Caused by Abdominal Straining.....	102
Figure 39. Abnormal Intermittent Pattern, Caused By Detrusor Sphincter Dyssynergia.....	102
Figure 40. Artificial Fluctuating Pattern The patient creates this pattern by repeatedly moving his stream across the commode outlet.....	103
Figure 41. Artificial "Squeezing" Pattern The patient creates this pattern by repeatedly obstructing urine flow by squeezing his foreskin or penis.	103
Figure 42. Artifactual uroflow peak produced by a spike The (black arrow) identifies an artifactual spike that the uroflowmetry reads as the flow peak. The correct peak flow (open arrow) must be read manually by the interpreter.	105

Important Information

Product Description

The study of urine discharge rate, or uroflowmetry, is recognized by the medical community to be valuable in the determination of comparative urological function.

The advanced technology in the FloPoint® Elite Uroflow System provides an accurate and convenient method to help assess bladder function. The FloSensor contains a disk that spins at a constant speed. When a flow of urine hits the disk, the motor must work harder to maintain the disk spinning at that same speed with the added weight of the urine. The FloSensor measures the amount of power needed to maintain the disk's original speed and uses that measurement to calculate the urine flow rate. The FloSensor also records the total amount of urine discharged by the patient. This data can be analyzed using the ScanPoint® with QuickPrint software to determine how quickly or slowly the patient urinated, any interruptions or changes in the flow, and the total volume of the patient's bladder.

Intended Use Warnings and Cautions

The FloPoint® Elite Uroflow System should be used only by individuals who have been trained and authorized by a physician or the institution providing patient care. All users must read this entire *User's Manual* prior to using the FloPoint® Elite Uroflow System.

Do not attempt to operate this instrument until you thoroughly understand all instructions and procedures in this manual. Failure to comply with these instructions may compromise the performance of the device and the reliability of its measurements. For the most current version of this *User's Manual* please visit the Verathon® web site at: <http://www.verathon.com/manuals.htm>.

Statement of Prescription

United States federal law restricts the FloPoint® Elite Uroflow System to use by, or on the order of, a physician. This statement is required per 21 Code of Federal Regulations (CFR) 801.109.

NOTE: It is standard practice to have medical staff authorize the use of the FloPoint® Elite Uroflow System within its intended use throughout an institution. Individual prescriptions for use are not required.

Statement of Intended Use

The FloPoint® Elite system is intended for uroflowmetry exams: the measurement and analysis of urine discharge rate and volume. The FloSensor is placed in a toilet bowl with a disposable funnel placed on top which directs the urine flow into the sensor. The patient may void into the sensor from either a standing or sitting position. Uroflowmetry data gathered by the FloSensor is transmitted to the ScanPoint® Remote via wireless radio link. When used in conjunction with ScanPoint® with QuickPrint software, a report containing the ICS values for uroflowmetry may be generated for the patient's medical record.

Contraindications

None

To assure safe and reliable operation for the use and the patient, please read and heed the following warnings and cautions.

WARNINGS and CAUTIONS:

To assure safe use and accurate results when using the FloPoint® Elite Uroflow System be aware of the following conditions:

Read and understand all procedures prior to use.

Before using the FloPoint® Elite Uroflow System, you must read and understand all the instructions and procedures in this *User's Manual*. Failure to comply with the instructions may affect the safety of the patient, clinician, and/or the accuracy of the exam results. For the most up-to-date version of the *User's Manual*, go to <http://www.verathon.com/manuals.htm>.

Clean after every use.

To ensure the reliability of the FloSensor, it is imperative that you clean the FloSensor with a typical disinfecting bathroom cleaner after every use.

When cleaning FloPoint® Elite Uroflow System components, do not use any products containing ammonia.**Sterilization.**

Do not sterilize this instrument.

Power Supply.

Only connect the FloPoint® Elite AC adapter to power sources consistent with the input specifications shown on the adaptor label.

Risk of fire and/or explosion.

Do not use the FloPoint® Elite Uroflow System in the presence of flammable anesthetics.

Risk of device damage:

Do not allow any foreign objects fall onto or into the device. Only expose the unit to fluids as directed for uroflow measurements and cleaning.

Do not subject the FloPoint® Elite Uroflow System to mechanical vibration, dust, or shock.

Do not store or use the FloPoint® Elite Uroflow System near heat sources such as radiators. Do not operate this device in temperatures below 10°C (50°F) or above 35°C (104°F). Do not store this device in temperatures below -10°C (14°F) or above 35°C (95°F).

Assure that the FloPoint® Elite Uroflow System is situated in an area with proper ventilation.

To comply with IEC 60601-1 and national electrical codes, the FloCharger must be wall-mounted as described in this manual.

Never cover the FloCharger or FloSensor with any cloth or other object that might interfere with proper ventilation.

Do not store or operate the FloPoint® Elite Uroflow System near equipment or devices that generate strong electro-magnetic fields.

Do not place any heavy objects on top of the FloSensor or FloCharger.

Hazardous materials present. Assure proper disposal.

The FloPoint® Elite Uroflow System may contain lead, batteries, and other environmentally hazardous materials. When the FloPoint® Elite Uroflow System has reached the end of its useful service life, return the device, and related accessories to a Verathon® Service Center for proper disposal. Alternatively, follow your local protocols for hazardous waste disposal.

Assure proper computer system configuration.

When using the FloPoint® Elite Uroflow System with ScanPoint® software, your computer must be minimally certified to EN / IEC / CSA / UL 60950 or 60101-1 standards. This configuration ensures that compliance to the EN/IEC 60601-1-1 system standard is maintained. Anyone connecting additional equipment to the FloPoint® Elite Uroflow System signal input port or signal output port configures a medical system, and is therefore responsible for ensuring that the system complies with IEC 60950 or EN/IEC 60601-1-1 (if in the vicinity of patients). If you need assistance, contact your biomedical staff, Verathon Medical® representative, or the Verathon® Medical Customer Care Department at 1.800.331.2313.

Assure proper distance from patient.

When transmitting data to or from your computer, make sure that the FloPoint® Elite, accessories, and computer are outside the patient vicinity (more than six feet (2 meters) from the patient). Refer to EN/IEC 60601-1 for the definition of patient vicinity.

Risk of injury or device damage.

Keep long hair and loose clothing away from the FloSensor. Keep foreign materials such as toilet paper and metal out of the FloSensor.

Do not flush FloPoint® Elite funnels down the toilet. Dispose of them as you would other medical waste.

Service.

The FloPoint® Elite Uroflow System should be serviced by authorized service personnel when:

- ◆ The AC power cord or plug has been damaged.
- ◆ Objects have become trapped in the instrument.
- ◆ The instrument has been exposed to rain or moisture other than that consistent with use as directed.
- ◆ The instrument does not appear to operate normally or exhibits a marked change in performance.
- ◆ The instrument has been dropped or the enclosure damaged.

The FloPoint® Elite Uroflow System does not contain any user-serviceable components. The user should not attempt to service the instrument beyond the procedures provided in this manual, unless directed by Verathon® service personnel. All other servicing should be referred to authorized service personnel.

If at any time you require assistance with your FloPoint® Elite Uroflow System, contact Verathon Medical® Customer Care at 800.331.2313 (Canada and US only) or 425.867.1348.

Introducing the FloPoint® Elite Uroflow System

Product Description

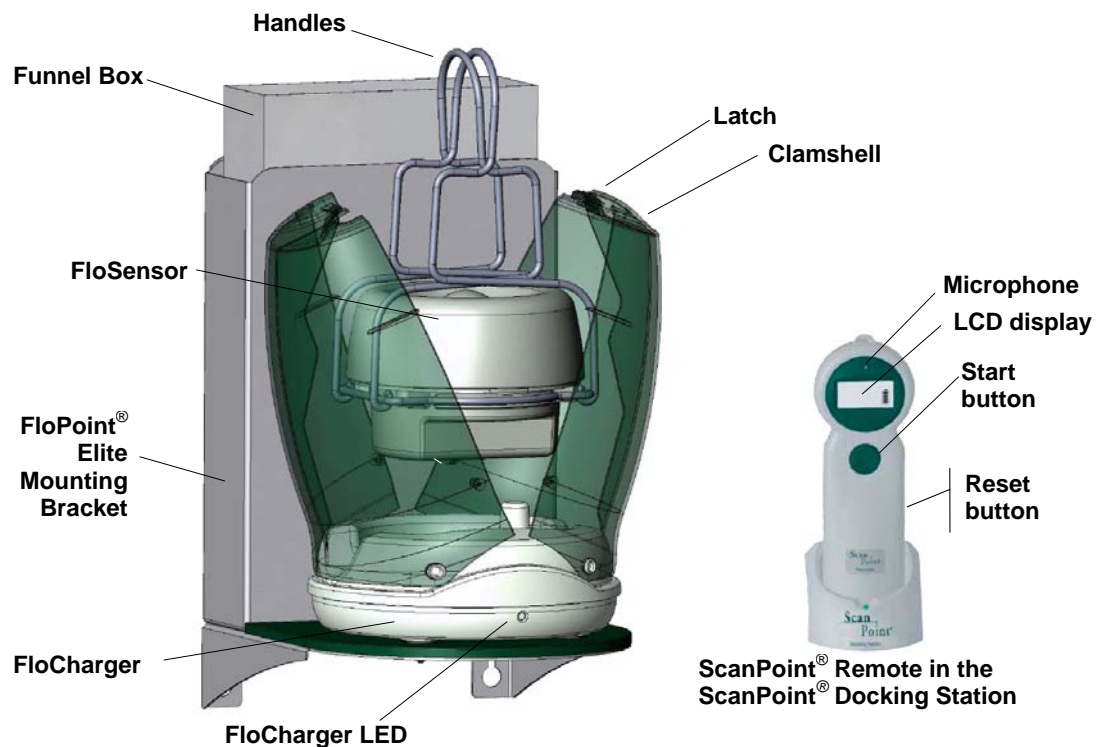
FloPoint® Elite Uroflow System measures and records a patient's pattern of urinary flow, allowing physicians to quickly assess the mechanics of flow and to diagnose abnormalities in voiding patterns (e.g., obstructed or restricted flow, superflow, etc.). The advanced technology in the FloPoint® Elite Uroflow System provides an accurate and convenient method to assess bladder function. The FloSensor rapidly and accurately records both the flow rate and the total amount of urine discharged by the patient. These measurements are transmitted via radio link to a remote handset which in turn interfaces with ScanPoint® with QuickPrint allowing data storage, diagnostic analysis, and report generation.

The FloPoint® Elite Uroflow System has a small footprint, making it easy and unobtrusive to use and store. The FloSensor, the heart of the FloPoint® Elite system, is lightweight and designed to fit in a standard toilet bowl during an exam. Between uses, it stows discreetly in the FloCharger, which also recharges the FloSensor battery.

FloPoint® Elite Uroflow System Parts and Features

The main features of the FloPoint® Elite Uroflow System and ScanPoint® Remote are illustrated in Figure 1.

Figure 1. FloPoint® Elite Uroflow System Components and Features



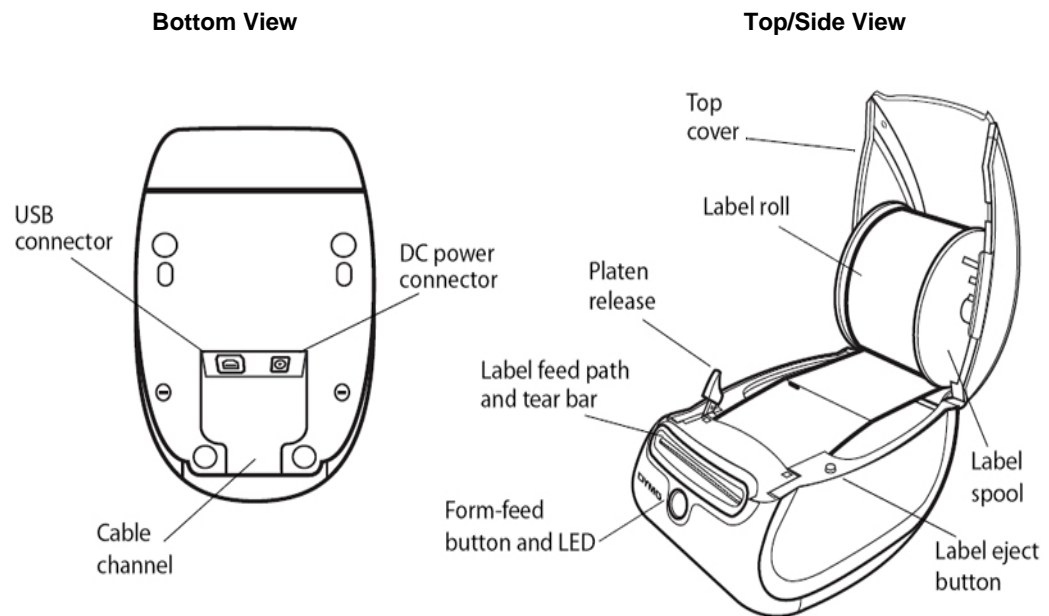
The FloSensor fits into a standard toilet bowl and measures a patient's urine flow rate and volume. The ScanPoint® Remote gathers patient data measured by the FloSensor and transmits it to the ScanPoint® host computer allowing further analysis and reporting options. The Remote also tracks other diagnostic information about the internal functioning of the FloSensor.

Part Name	Purpose
Handles	Provide a means for carrying the FloSensor, suspend the FloSensor in the toilet bowl, and support the disposable funnel.
FloSensor	Measures urine volume and flow rate.
Latch	Allows the FloCharger housing to be closed securely.
Clamshell	Protects the FloSensor and FloCharger from dust and contaminants when not in use.
FloCharger	Recharges the FloSensor battery
FloPoint® Elite Mounting Bracket	Attaches to the wall, securely holding the FloCharger and a funnel box 3 feet (0.914 m) or more above the floor.
Funnel Box	Contains 40 disposable funnels for attachment to FloSensor during uroflow exams.
ScanPoint® Remote	Acts as a remote control for starting/stopping the FloSensor. Its LCD display communicates exam and device status to the user. The FloSensor transmits exam data to the Remote via a wireless radio link. The Remote, in turn, downloads this data to a computer with ScanPoint® with QuickPrint software.
Start/Stop button	Starts/stops FloSensor functions for exams and calibration.
LCD display	Displays measurement data and device status.
Microphone	Records voice annotations.
Reset button	A recessed button on the back of the Remote that re-activates the Remote when it doesn't self-activate. Occasionally when the Remote battery has been completely discharged, you may need to reset the Remote before it can be used again.

ScanPoint® Label Writer (Optional Printer)

The ScanPoint® Label Writer is an optional component of the FloPoint® Elite System. It prints patient exam data on self-adhesive labels (approximately 2.5" x 6") that can be attached to a patient record. The parts and features of the ScanPoint® Label Writer are shown in (Figure 2).

Figure 2. ScanPoint® Label Writer Parts and Features



The ScanPoint® Label Writer is a direct thermal printer and does not use toner, ink cartridges, or a ribbon. Instead, it uses heat from a thermal print head to print on specially treated labels.

- ◆ The **Form-feed button** on the front of the printer advances a single label.
- ◆ The **Label eject button** is used to remove labels from the printer when changing rolls.
- ◆ The **LED status light** allows you to visually determine the current state of the printer:
 - **Solid blue** - Power is on and the printer is ready.
 - **Flashing blue** - Labels are not loaded properly or label spool is empty.

ScanPoint® Online

ScanPoint® with QuickPrint software is included with your FloPoint® Elite system. During an exam, data is gathered from the FloSensor by the ScanPoint® Remote. The Remote, in turn, downloads this data to the ScanPoint® host computer allowing patient record storage, further diagnostic analysis, and report generation.

ScanPoint® Online is an innovative service that enhances and expands the capabilities of the FloPoint® Elite Uroflow System.

ScanPoint® Online allows you to:

- ◆ View exam measurements and graphs from patient exams.
- ◆ Print exam results for patient records and for reimbursement (if applicable) using your choice of report format.
- ◆ Save a PDF copy of the exam report that can be imported into other electronic medical record systems.
- ◆ Save and store images online - allowing you to access patient records from any Internet-enabled computer (HIPAA compliant).
- ◆ Take advantage of ScanPoint® automatic file backup service.
- ◆ Ensure the optimum accuracy of your FloPoint® Elite system by calibrating online, in a matter of minutes, and as often as you wish.
- ◆ Take advantage of automatic software upgrades.

ScanPoint® Premium Warranty Total Customer CareSM Plan

The Premium Warranty Total Customer CareSM Plan includes ScanPoint® Online, insures your device against damage, theft and loss, provides free next-day loaners, and pays all shipping charges.

Getting Started

The previous section provided introductory information about the FloPoint® Elite Uroflow System. This section provides information on how to set up your FloPoint® Elite Uroflow System prior to first use.

Required Equipment

In addition to the components included with your FloPoint® Elite system (see “FloPoint® Elite Uroflow System Parts and Features” beginning on page 16), highly recommended equipment includes:

- ♦ A Windows® computer with a high speed Internet connection. (Computer hardware, software and operating system requirements can be found on page 119.)

NOTE: To use ScanPoint® Online, a Windows computer with an Internet connection is required.

- ♦ Adobe® Acrobat® Reader®, for viewing and printing reports (see “Step 3: Installing Adobe® Acrobat® Reader” on page 25).

Getting Started

To assure successful set up and operation of your FloPoint® Elite Uroflow System, follow these seven steps in the order given:

- Step 1.** Unpack the FloPoint® Elite components and related accessories. Instructions begin on page 21.
- Step 2.** Attach the Mounting Bracket to the wall and attach the FloCharger to the Mounting Bracket. Instructions begin on page 25.
- Step 3.** Install Adobe Acrobat Reader. Instructions begin on page 26.
- Step 4.** Install ScanPoint® with QuickPrint software on your PC. Instructions begin on page 26.
- Step 5.** Set your ScanPoint® with QuickPrint user preferences. Instructions begin on page 33.
- Step 6.** Install FloPoint® devices (ScanPoint® Docking Station and optional Label Writer) using the Windows Install New Hardware Wizard. Instructions begin on page 39.
- Step 7.** Charge the ScanPoint® Remote and FloSensor batteries. Instructions begin on page 44. **NOTE:** The FloSensor and the Remote should arrive from the factory already charged.

Step 1: Unpack the Box and Check the Components

Set the shipping container right side up and carefully open the top flaps (do not insert anything sharp through the top of the box). Remove the contents and verify that you have received everything listed below. If anything is missing or damaged, notify your authorized Verathon Medical® representative or Verathon Medical® Customer Care Department at 1.800.331.2313.

Part and Part Number	Name and Description
----------------------	----------------------



0570-0175

FloSensor with Handles:

Measures urine volume and flow rate. The Handles suspend the FloSensor inside the toilet.



0570-0176

FloCharger with Clamshell:

Stores the FloSensor and recharges the batteries.



0800-0337

FloPoint® Elite Mounting Bracket:

Attaches to the wall, securely holding the FloCharger and a funnel box 3 feet (0.914 m) or more above the floor.

Part and Part Number	Name and Description
----------------------	----------------------



0570-0174

ScanPoint® Remote:

Acts as a remote control to start and stop the FloSensor, displays information on flow measurements and device status, records voice annotations, and transmits data to a ScanPoint® host computer when placed in the ScanPoint® Docking Station (below).



0570-0168

ScanPoint® Docking Station:

Transmits data from the ScanPoint® Remote to the ScanPoint® host computer and recharges the Remote batteries.



0900-1238

ScanPoint® with QuickPrint Installation CD:

Produces reports based on the data gathered during an exam and submitted by the ScanPoint® Remote.



0900-1445

FloPoint® Elite In-Service CD:

Includes FloPoint® Elite User's Manual and Quick Reference Cards.



0800-0297

Box of Paper Funnel:

Help direct the urine flow toward the FloSensor.

Box contains 40 funnels.

Part and Part Number	Name and Description
----------------------	----------------------



Activation Tool:

Use to press the Reset button on the ScanPoint® Remote if the Remote needs to be reactivated.

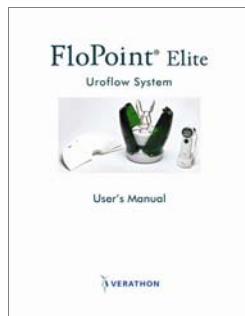
0130-0181



Lanyard:

Attaches to the ScanPoint® Remote, if desired, to assist with placement of the Remote in proximity to the FloSensor.

0264-0008



User's Manual

FloPoint® Elite Uroflow System User's Manual (this manual).

0900-1442



FloPoint® Elite Mounting Bracket Template

Aids in attaching the Mounting Bracket to the wall.

0900-1557

Part and Part Number	Name and Description
----------------------	----------------------



FloPoint® Elite Quick Reference Card:
Provides a summary of essential user instructions.

0900-1443



FloPoint® Elite Calibration Quick Reference Card:
Provides instructions for the FloPoint® Elite calibration procedure.

0900-1444

ScanPoint® Label Writer

If you ordered a ScanPoint® Label Writer, the following items are included:

Part and Part Number	Name and Description
----------------------	----------------------






ScanPoint® Label Writer:
Prints exam results on adhesive label media.

0570-0178



USB Cable:
Connects the ScanPoint® Label Writer to the ScanPoint® host computer.

0600-0233

Part and Part Number	Name and Description
 0600-0232	Label Writer Power Cord Connects the Label Writer power adaptor to a wall outlet.
 0275-0002	Power Supply: Connects the power cord to the Label Writer.
 0125-0446	Roll of Labels: Labels in roll format properly sized for the ScanPoint® Label Writer.

Step 2: Attach the Mounting Bracket to the wall and attach the FloCharger to the Mounting Bracket.

- ◆ For an installation of the FloCharger in the patient vicinity to comply with IEC 60601-1 and the National Electric Code in the United States and the Canadian Electric Code in Canada, no part of the FloCharger cord must be lower than 3 feet above the floor. Use the cord wrap underneath the FloCharger to protect the unused portion of the cord. Any other installation method will jeopardize compliance of the FloPoint® Elite system with IEC 60601-1 and the NEC or CEC and will therefore void any warranties (implied or otherwise) offered by Verathon Medical® for the instrument.
- ◆ **WARNING:** Install the FloCharger Mounting Bracket at a height of at least 3 feet (10 meters) above the floor.
- ◆ **WARNING:** Use the cord wrap underneath the FloCharger to protect the unused portion of the cord.
- ◆ **WARNING:** Installation of a FloCharger that does not use the Mounting Bracket or alternate protection of the cord will not be compliant with the Medical-Electrical Safety Standard (IEC 60601-1). Alternate protection requires that the cord be 3 feet (10 meters) above the floor and not easily accessible by a patient.

♦ **NOTE:** The installation kit is compatible with dry-wall construction. If the wall material differs, an alternate mounting system must be used.

1. Attach the Mounting Template to the wall such that the bottom of the template is level and 3 feet (914 cm) above the floor.
2. At each of the 4 marked locations, press the tip of the anchor into the drywall using a #2 Phillips screwdriver. Drive anchor clockwise until anchor stops flush with the wall. Insert the screw into the anchor. Tighten the screw leaving 1/4" of thread exposed on which to hang the bracket.
3. Hang the bracket on the 4 screws and tighten the screws. The Mounting Bracket should be held securely flush with the wall.
4. Measure the distance from the bracket to the outlet. On the FloCharger, wrap any power cord in excess of that length on the cord-wrap recess underneath the FloCharger. If necessary, use adhesive tape to keep the cord in place.
5. Mount the FloCharger on the 4 posts of the Mounting Bracket. Start by getting one post into one charger foot, then place the other 3 feet on the posts. Push the FloCharger down until it is fully seated on the posts.
6. Attach the correct prongs into the AC adapter. The FloPoint® Elite system is compatible with power systems world-wide and a set of prongs for various systems are included with the AC adapter. The prongs will click into place and be held securely.
7. Plug the AC adapter into the socket. The FloCharger is now ready to charge. The FloSensor and the ScanPoint® Remote should come from the factory already charged. After the initial charge, recharge the batteries whenever they are low or completely drained.

Step 3: Installing Adobe® Acrobat® Reader

ScanPoint® with QuickPrint uses Adobe Acrobat Reader (version 6.0 or higher) to print labels and patient reports. If Acrobat Reader software is not already installed on your computer, you can obtain a free copy at the Adobe Web site: <http://www.adobe.com>. Follow the links for Acrobat Reader. After installing the Acrobat Reader software, you must run the program once to accept the End User License Agreement in order to use Acrobat Reader for printing reports.

Step 4: Install ScanPoint® with QuickPrint

IMPORTANT! You must have Administrator privileges to install ScanPoint® with QuickPrint.

The dialog boxes displayed on your computer may differ slightly from those illustrated in the following procedures. If so, follow the instructions in the dialog boxes displayed on your screen.

To use the ScanPoint® Online service, you need to install the ScanPoint® with QuickPrint software included on the installation CD. The software creates links on your Start menu and desktop to ScanPoint® with QuickPrint, ScanPoint® online help, the ScanPoint® online manual, and the Verathon® Web site.

NOTE: Review the following information before beginning installation of the ScanPoint® with QuickPrint software.

- ◆ Verify that your computer meets the minimum requirements for this software installation. (See “Computer Hardware and Software Requirements” on page 119.)
- ◆ You must have Administrator privileges on your computer to install this software.
- ◆ The dialog boxes displayed on your screen may differ slightly from those illustrated in the following steps. In this case, follow the instructions in the dialog boxes displayed on your screen.
- ◆ Do not plug in any new hardware devices (Label Writer, Docking Station, etc.) before installing ScanPoint® with QuickPrint. If you have already plugged one in, cancel the Add New Hardware dialog box and disconnect the device(s) before proceeding.
- ◆ **Important:** Make sure you have the latest service pack and critical updates for the version of Windows that you are running. To find recent security updates, visit Windows Update. (From your Internet Explorer browser window, select **Tools > Windows Update**.)

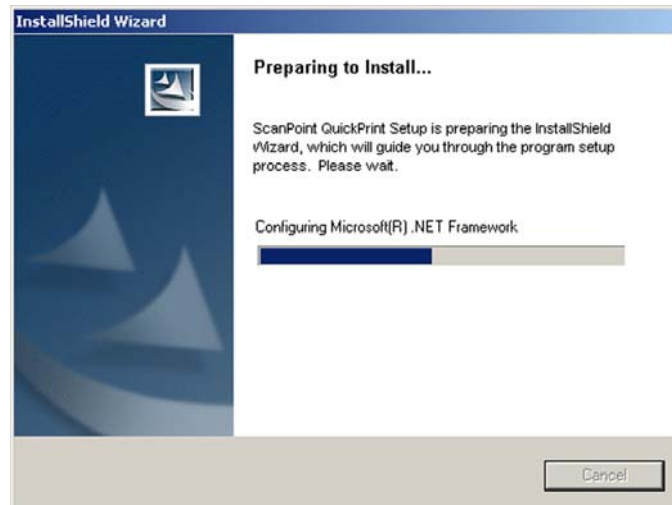
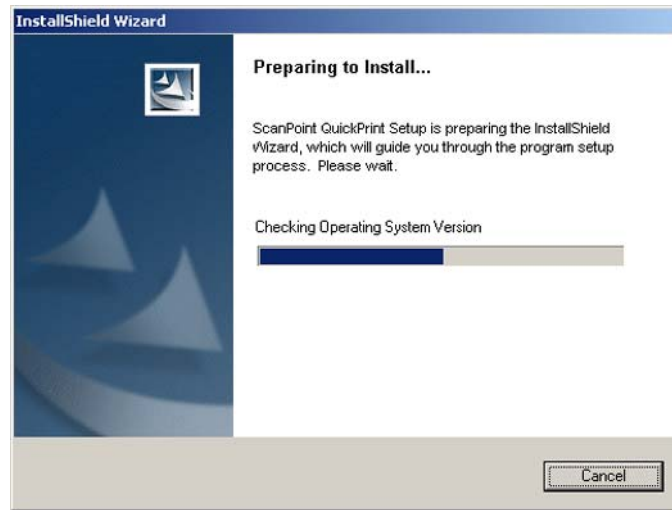
Installing ScanPoint® with QuickPrint Software

1. To begin, place the installation CD into your computer's CD drive. The Install Shield Wizard should start automatically.

NOTE: If the Install Shield Wizard does NOT open automatically:

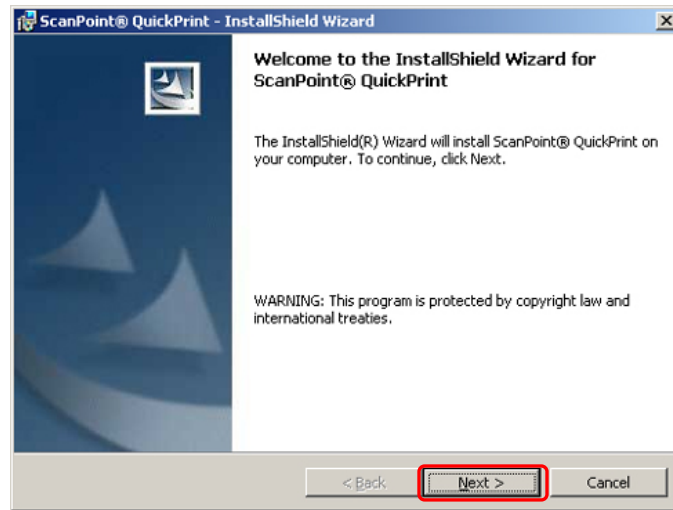
- a) Double click the My Computer icon on your desktop.
- b) Double click your CD drive icon or name.

2. The Preparing to Install screens will open.



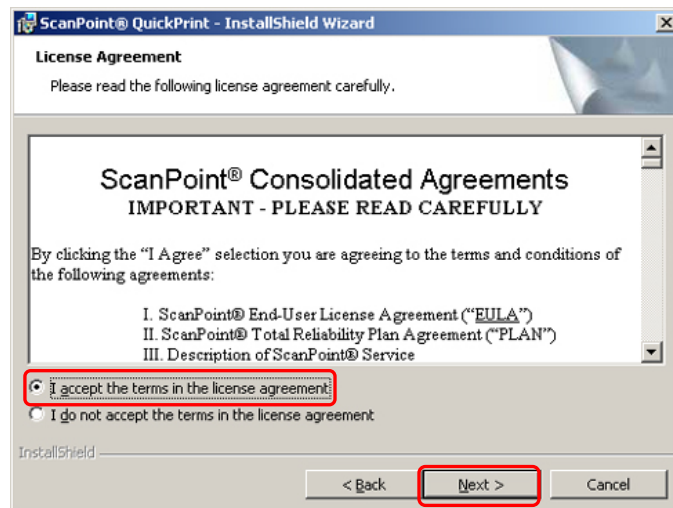
Followed by the ScanPoint® with QuickPrint InstallShield Wizard dialog box.

Click NEXT.

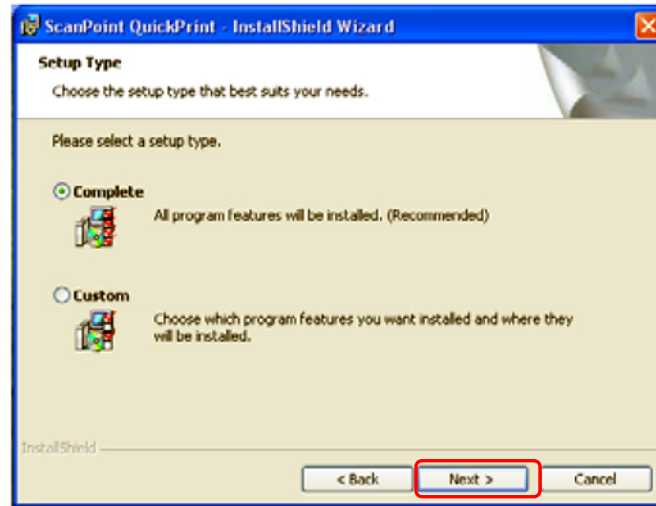


3. The ScanPoint® with QuickPrint license agreement is displayed. You must accept the agreement to continue with installation.

Click the I ACCEPT THE TERMS IN THE LICENSE AGREEMENT radio button.
Click NEXT.



4. The Setup Type dialog box is displayed.



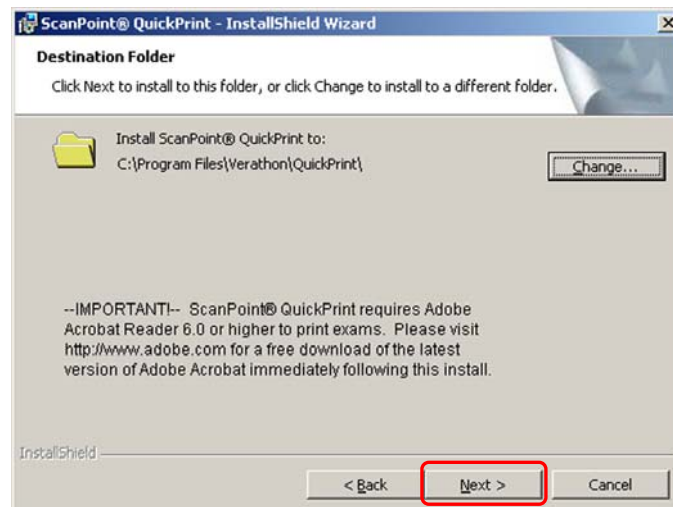
If you have a ScanPoint® Label Writer: Select the COMPLETE radio button.

If you do not have a ScanPoint® Label Writer: Select the CUSTOM radio button. The next dialog box lists the features that will be installed. Clear the check for installing the Label Writer.

Click NEXT.

5. The Destination Folder dialog is displayed. You may:
 - ◆ Accept the default location (no action is required).
 - ◆ Change the location: Click the CHANGE button. Enter or browse to the desired location and click OK to return to the Destination Folder dialog.

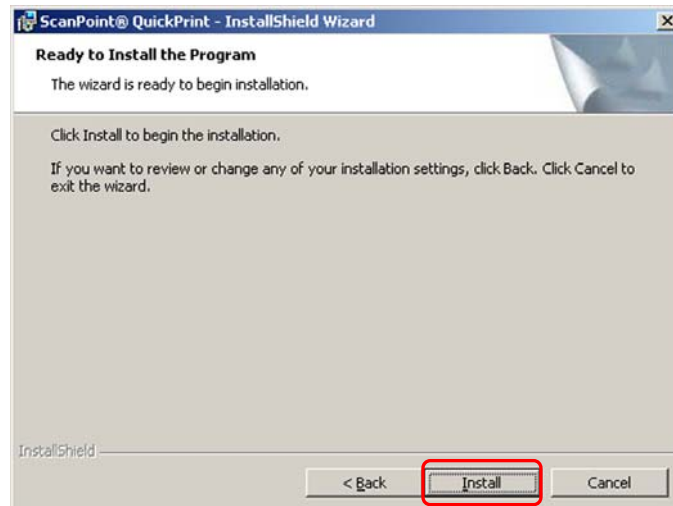
Click NEXT.



NOTE: ScanPoint® with QuickPrint requires Adobe® Acrobat® Reader 6.0 or higher to print exams. Please visit <http://www.adobe.com> for a free download of

the latest version of Adobe® Acrobat® immediately following the installation of the ScanPoint® with QuickPrint software.

6. The Ready to Install the Program dialog is displayed. Click INSTALL.

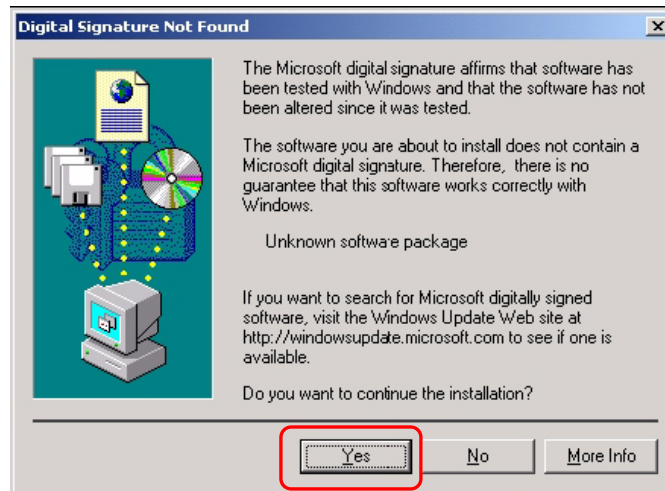


During installation, a Microsoft Warning dialog box is displayed stating that Microsoft has not yet tested this software for compatibility with the Windows® XP and Windows 2000 operating systems. However, Verathon® has tested the ScanPoint® with QuickPrint software and hardware drivers rigorously and is confident that they are fully compatible with both Windows XP and Windows 2000.

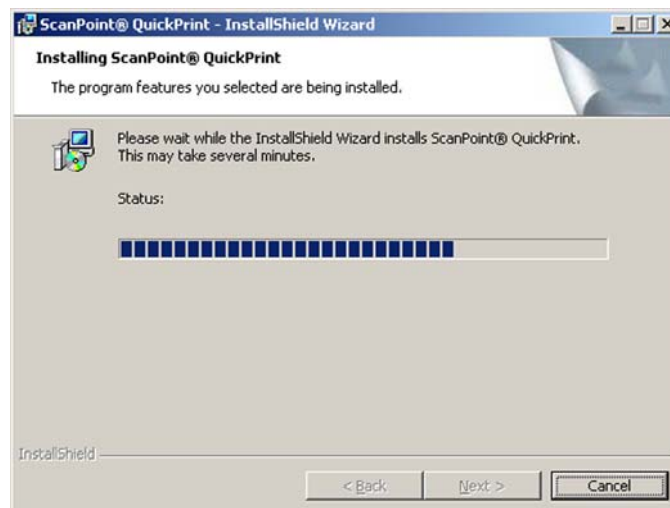
Click CONTINUE ANYWAY if this dialog is displayed.



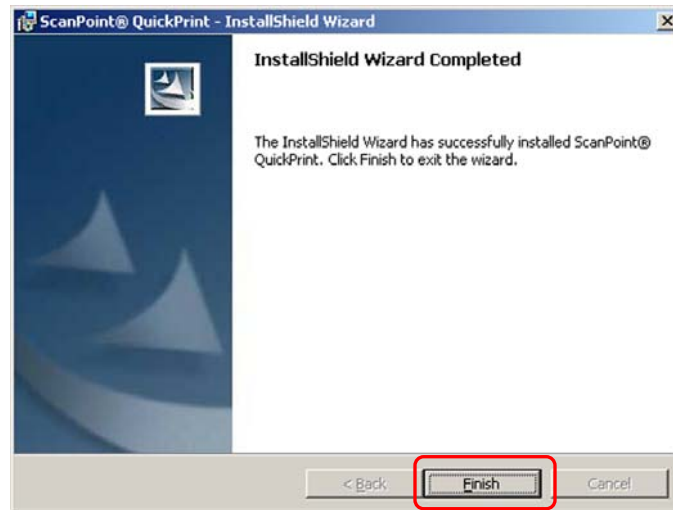
7. The Digital Signature dialog is displayed (Windows 2000 only). Click YES to continue installation.



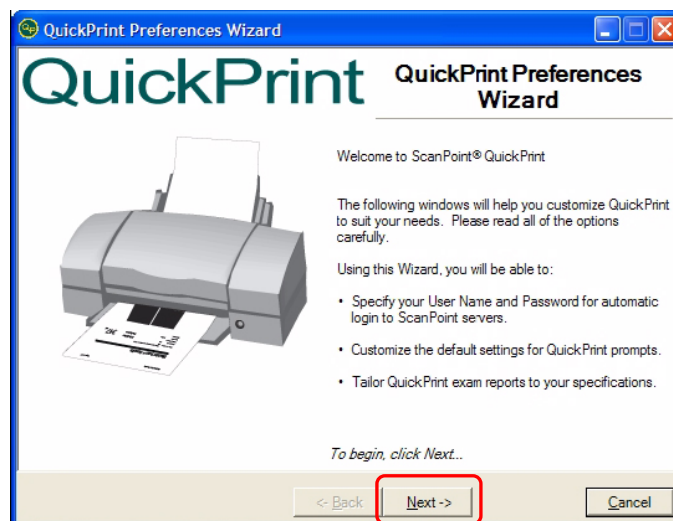
8. The Installing ScanPoint® with QuickPrint screen is displayed.



9. When the installation is complete, the InstallShield Wizard Completed dialog box is displayed. Click FINISH.



10. The ScanPoint® with QuickPrint software installation is complete. ScanPoint® with QuickPrint starts automatically and the QuickPrint Preferences Wizard opens.



Click NEXT to set your ScanPoint® user preferences.

Step 5: Setting ScanPoint® User Preferences

Once you have installed ScanPoint® with QuickPrint, and your FloPoint® Elite devices, you can use the QuickPrint Preferences Wizard to customize QuickPrint settings.

The following procedure shows you how to use the Preferences Wizard to set up your initial preferences. If at any time you want to change a specific setting, go to the Tools menu, select PREFERENCES, and click on the appropriate tab. For information on the Preferences dialog boxes, see "Changing Your Preferences" on page 77.

To set up your user preferences:

1. Open ScanPoint® with QuickPrint by double-clicking the ScanPoint® icon in your system tray (the area next to your clock in the bottom right corner of your screen).



If ScanPoint® with QuickPrint is not running, double-click the ScanPoint® with QuickPrint icon on your desktop, or click the START button and select

Programs > Verathon® > ScanPoint® with QuickPrint > ScanPoint® with QuickPrint.

2. The first time you run ScanPoint® with QuickPrint, the Preferences Wizard will start automatically. Otherwise, from the Tools menu, select “Preferences Wizard” to open the first dialog box.



3. Click NEXT to open the Set Your ScanPoint® Login dialog.
4. Enter the User Name and Password provided to you by Verathon® and click CONNECT.

NOTE: If you did not receive a ScanPoint® User Name and Password, please contact Verathon Medical® Customer Care at 1.800.331.2313.

In a few moments, the status box will indicate that ScanPoint® authentication is complete.

5. Click NEXT to open the Customize QuickPrint Prompts dialog.

NOTE: Do not change the default ScanPoint® URL in this dialog unless requested to do so by the Verathon Medical® Customer Care Department.

NOTE: This ScanPoint® User Name and Password will apply every time you log in to Windows using your current user account. There is no time-out period: the User Name and Password you enter will remain active until you change them. For information on changing your ScanPoint® user profile, see “Changing Your Preferences” on page 77.

6. Indicate whether you want QuickPrint to prompt you for exam details (Patient ID, Patient Name, Gender, Position, Normal Void, Operator, and Physician) before transmitting exam results.
 - ◆ If you choose to be prompted for exam details, you can enter default names for the operator (who performed the exam) and physician (who ordered the exam) in the Default Operator and Default Physician text boxes. The names you enter will automatically appear in the Operator and Physician text fields after each exam. You will be able to overwrite the default names before printing the exam results.
 - ◆ If you choose not to be prompted for exam details, QuickPrint will automatically print each exam without prompting you for exam details. Blank spaces will appear in the printed exam report for you to fill in the Patient ID, Patient Name, Gender, Position, Normal Void, Operator, and Physician.

NOTE: These exams will not be available for future access in ScanPoint®.

QuickPrint Preferences Wizard

Step 2 of 4 - Customize QuickPrint Prompts - Exam Details
Indicate below whether you wish to be prompted for Exam Details.

Yes, I want QuickPrint to prompt me for Exam Details (Patient ID, Operator, etc.) before I print an exam.

No, I do not wish to be prompted for Exam Details before printing an exam report. I prefer to print the report immediately, without entering patient information.

IMPORTANT: Please note that if you do not enter exam details before printing an exam using QuickPrint, the exam will not be accessible in ScanPoint®Online.

If you have chosen to be prompted for the Exam Details, you may assign a default Operator and Physician in the fields at right to save time (optional).

Default Operator: Jane Doe

Default Physician: Dr. Smith

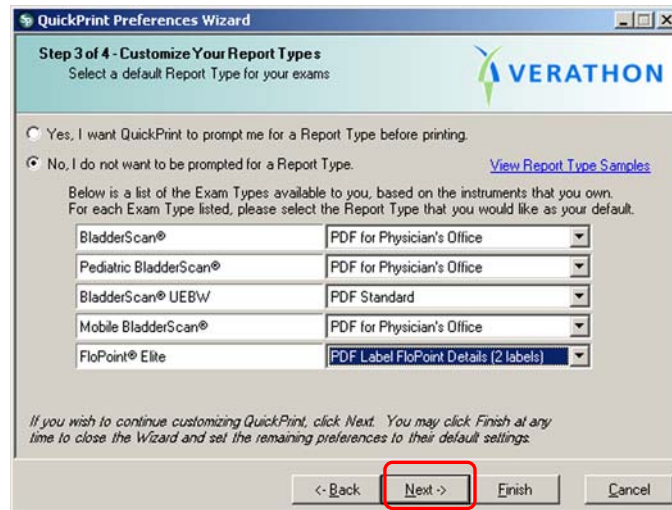
If you wish to continue customizing QuickPrint, click Next. You may click Finish at any time to close the Wizard and set the remaining preferences to their default settings.

< Back Next -> Finish Cancel

When you finish filling in the dialog box, click NEXT to open the Customize Your Report Types dialog.

7. Choose whether you want QuickPrint to prompt you to choose a report type each time an exam is performed. To view samples of each report type, click the VIEW REPORT TYPE SAMPLES link on the right side of the dialog box.
 - ◆ To have QuickPrint prompt you to choose a report type each time an exam is performed, choose the YES, I WANT QUICKPRINT TO PROMPT ME FOR A REPORT TYPE BEFORE PRINTING radio button.
 - ◆ If you do not want to be prompted to choose a report type each time you print an exam, choose the NO, I DO NOT WANT TO BE PROMPTED FOR A REPORT TYPE radio button.
8. Choose the default report type you want to use from the drop-down menus.

Important! If you do not enter the Patient ID and Operator before printing an exam, you will not be able to access the exam later in ScanPoint®.



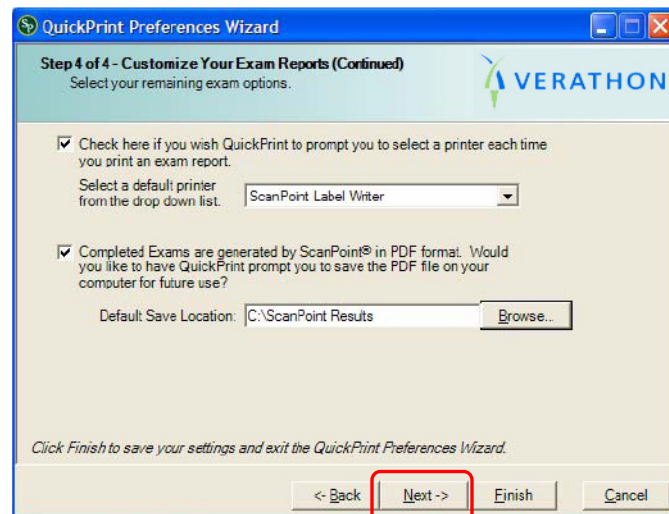
Click NEXT to open the last Customize Your Exam Reports dialog.

9. If you want QuickPrint to ask you to specify the printer each time you print an exam report, click the top radio button.

Select a default printer from the options in the drop-down menu.

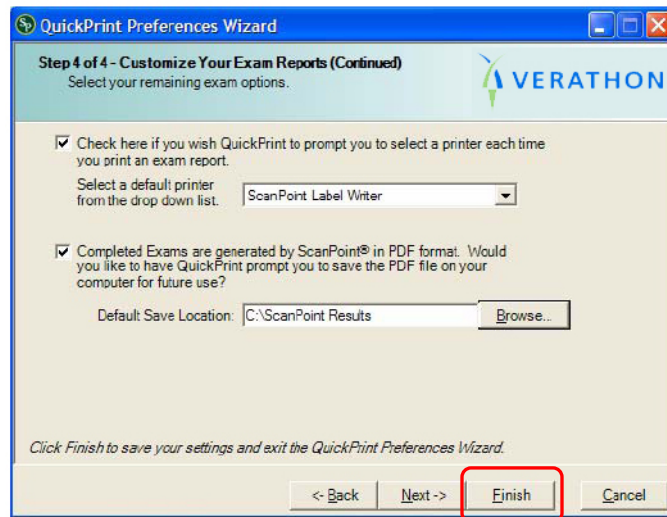
If you want QuickPrint to save the exam report in PDF format (opened in Adobe Acrobat Reader) each time it prints an exam, place a check mark in the bottom check box. The PDF can be incorporated into a patient's electronic medical record.

If you wish, enter a default location on your computer for saving exams in the Default Save Location text box. You will always be able to specify a different location to save a specific exam.



Click NEXT. The Preferences Wizard Complete dialog box is displayed.

10. Click FINISH to exit the Preferences Wizard. For more information on Preferences settings, see “Changing Your Preferences” on page 77.



About User Profiles

Your User Name and Password are associated with the User Profile you requested from Verathon® when you purchased your FloPoint® Elite instrument. The ScanPoint® features available to you depend on your user profile.

There are three common types of ScanPoint® user profiles:

- ♦ **Administrative Users** have access to all ScanPoint® features. Administrative users can prepare new exams, upload exam results, accept or reject exam results, view past exams, and calibrate FloPoint® Elite instruments.
- ♦ **Clinical Users** can prepare new exams, upload exam results, accept or reject exam results, and view past exams. Clinical users cannot calibrate FloPoint® Elite instruments.
- ♦ **Technical Users** can calibrate FloPoint® Elite instruments, but cannot prepare new exams, upload exam results, accept or reject exam results, or view past exams.

Each time a user logs in to a Windows computer with ScanPoint®, QuickPrint automatically connects to ScanPoint® using the user profile they entered in the Preferences Wizard or Preferences dialog box. To prevent unauthorized access to patient data in the ScanPoint® system, Verathon® recommends setting a screen saver password, or locking the computer when not in use. For more information on recommended security precautions, go to the ScanPoint® with QuickPrint Help menu and choose SECURITY BEST PRACTICES.

If you need to change user profiles or assign new users at any time, please contact your Verathon Medical® representative or the Verathon Medical® Customer Care Department at 1.800.331.2313.

Step 6: Installing FloPoint® Elite Devices

In order for your FloPoint® Elite peripheral devices (ScanPoint® Docking Station and optional Label Writer) to function properly, they must be installed using the Microsoft Found New Hardware Wizard.

You will need to complete a separate wizard for each device.

IMPORTANT! The dialog boxes displayed on your computer may differ slightly from those illustrated in the following procedures. If so, follow the instructions in the dialog boxes displayed on your screen.

Installing the ScanPoint® Docking Station

NOTE: The ScanPoint® Docking Station has a USB connector (Figure 3). To make sure that you have the ScanPoint® Docking Station, check that it has a USB connector and that the label on the bottom says, “ScanPoint® Docking Station.”

Figure 3. The ScanPoint® Docking Station has a USB Connector.



1. Turn the computer on. Plug the ScanPoint® Docking Station into any available USB connector on your computer.

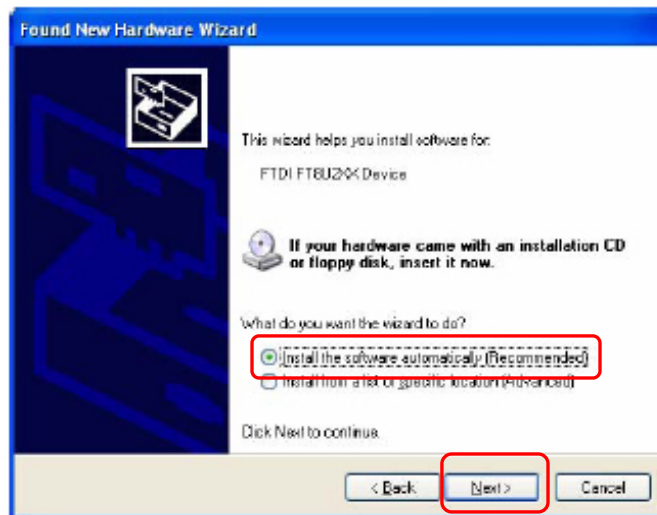
The Found New Hardware Wizard is displayed.

Click NEXT.



2. The second New Hardware Wizard screen is displayed.

Select the INSTALL THE SOFTWARE AUTOMATICALLY radio button and click NEXT to install the drivers for the hardware automatically.



3. A warning is displayed stating that Microsoft has not yet tested this software for compatibility with the Windows XP and Windows 2000 operating systems. However, Verathon® Inc. has tested the ScanPoint® with QuickPrint software and hardware drivers rigorously and is confident that they are fully compatible with both Windows XP and Windows 2000.

Click CONTINUE ANYWAY.



4. When driver installation is complete, a dialog box is displayed to tell you the installation was successful. Click FINISH.



Setting up the ScanPoint® Label Writer

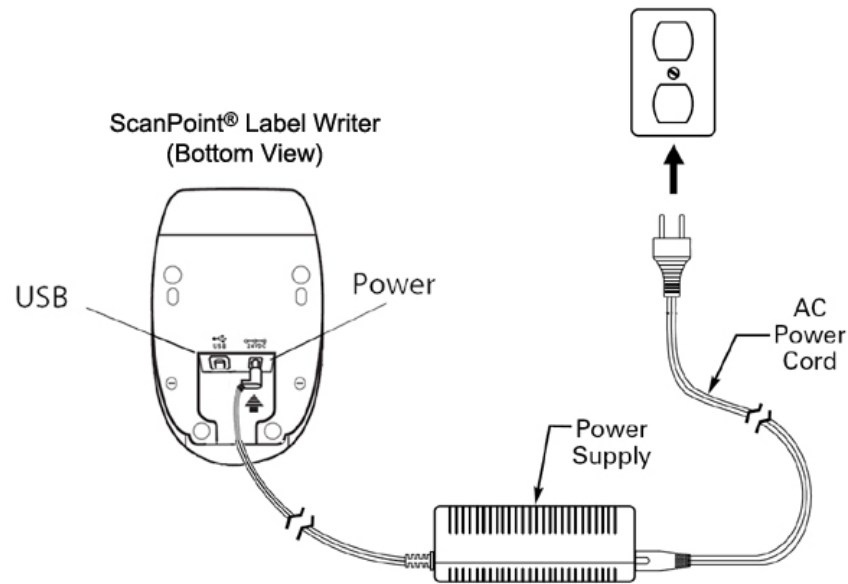
NOTE: This procedure is required only if your order includes the ScanPoint® Label Writer.

Connecting the Label Writer to Power

Refer to Figure 4

1. Plug the power cord into the power supply.
2. Plug the power supply into the power connector on the bottom of the printer.
3. Plug the other end of the power cord into a power outlet near the ScanPoint® host computer.

Figure 4. Connecting the ScanPoint® Printer to Power



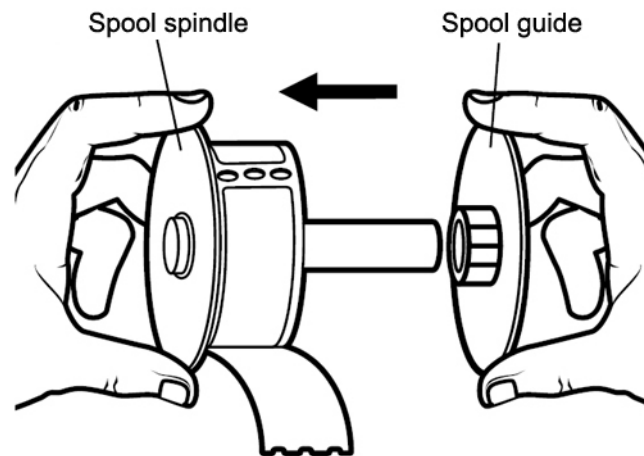
4. Plug the USB cable into the USB port on the bottom of the printer.
5. Insert the power and USB cables through the cable channel and set the printer down.
6. Connect USB cable to any available USB port on your computer **ONLY when prompted to do so during software installation.**

Installing a Roll of Labels

1. Press the form-feed button to eject the labels that protected the Label Writer during shipment.
2. Open the top cover and remove any packing material inside the label compartment.

3. Remove the label spool.
4. Hold the spool spindle in your left hand and place the label roll on the spindle so that the labels feed from underneath and the left edge of the label roll is flush against the side of the spool (Figure 5).

Figure 5. Loading a Roll of Labels on the Spool Spindle

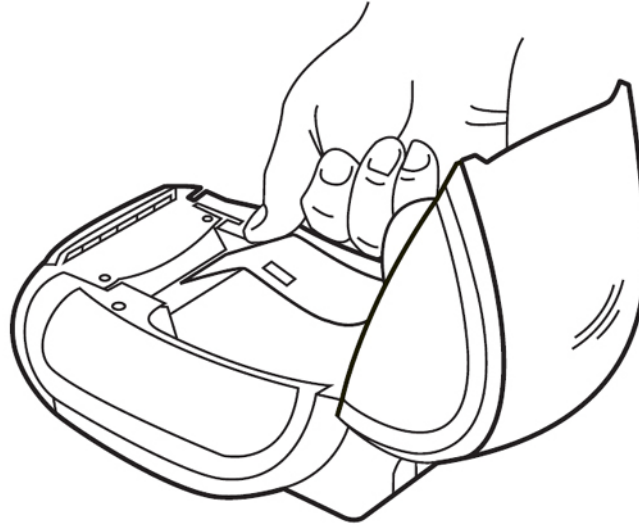


5. Place the spool guide onto the right side of the spool and press the guide tightly against the label roll, leaving no gap between the roll and the spool.

NOTE: The roll of labels must fit snugly against both sides of the label spool, with no gaps, so that the labels do not become misaligned as they feed through the printer.

6. Align the left edge of the label with the left edge of the label feed slot and insert the label into the slot (Figure 6).

Figure 6. Inserting a Label into the Label Feed Slot



7. The Label Writer feeds the labels, stopping at the beginning of the first label. If the Label Writer stops without feeding the label, make sure the label is fully inserted and then press the form-feed button. Close the top cover.

Connect the Label Writer to Your Computer

1. Make sure that:
 - ♦ The Label Writer is set up and plugged into a power outlet as described in the previous paragraphs.
 - ♦ Your computer is turned on and the ScanPoint® Installation CD is in your computer's CD drive.
2. Plug the Label Writer's USB connector into any available USB connector on your computer. The Install New Hardware Wizard will start up automatically.
3. Follow the on-screen directions for installing new hardware as with the ScanPoint® Docking Station.

Step 7: Charge the Batteries

The FloSensor and the ScanPoint® Remote should come from the factory already charged. After the initial charge, recharge the batteries whenever they are low or completely drained.

Charging the ScanPoint® Remote Battery

Use the ScanPoint® Docking Station to charge the ScanPoint® Remote.

The ScanPoint® Docking Station is a dual-purpose device:

- ◆ It transmits exam data stored in the Remote to the ScanPoint® host computer via a USB connection.
- ◆ It charges the Remote battery (**NOTE:** To charge the Remote, the computer must be turned on).

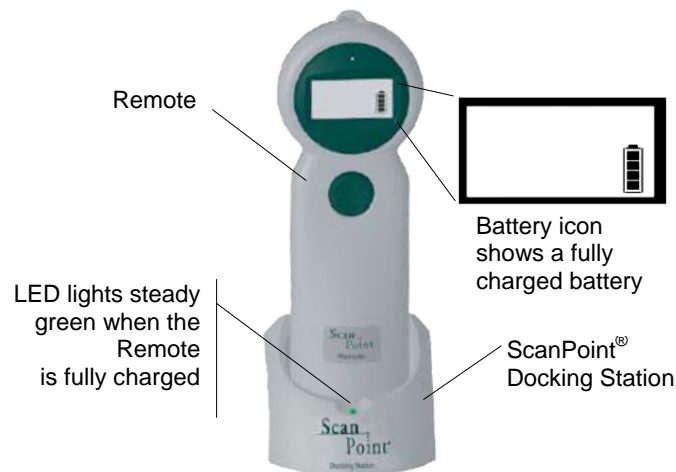
To charge the ScanPoint® Remote battery:

NOTE: The ScanPoint® software and ScanPoint® Docking Station drivers must already be installed. See “Step 4: Install ScanPoint® with QuickPrint” on page 26 for instructions on performing those tasks.

1. Make sure the ScanPoint® Docking Station is connected to the ScanPoint® host computer via its USB connector and that the computer is turned on.
2. Set the Remote in the Docking Station. The battery icon on the Remote display will scroll from empty to full to indicate that the Remote is charging.
3. Leave the Remote in the Docking Station until the battery icon displays a minimum of two segments.

NOTE: Fully charging the battery may take up to 6 hours.

Figure 7. ScanPoint® Remote Battery Icon



Charging the FloSensor Battery

1. Make sure the FloCharger AC adapter has been plugged into a wall outlet.
2. Seat the FloSensor on the FloCharger base. The FloCharger LED will alternate orange and green to indicate that the FloSensor battery is charging.
3. When the FloCharger LED is solid green, the FloSensor battery is fully charged and the FloSensor is ready for use.

NOTE: Fully charging the FloSensor battery may take up to 6 hours.