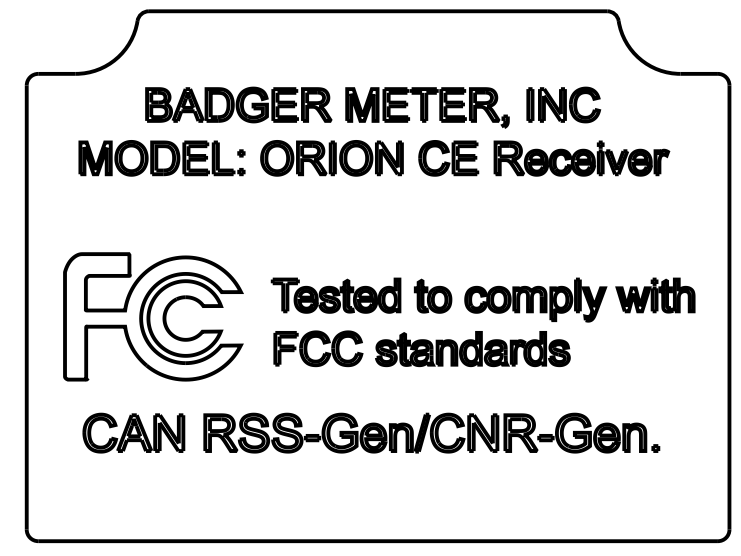
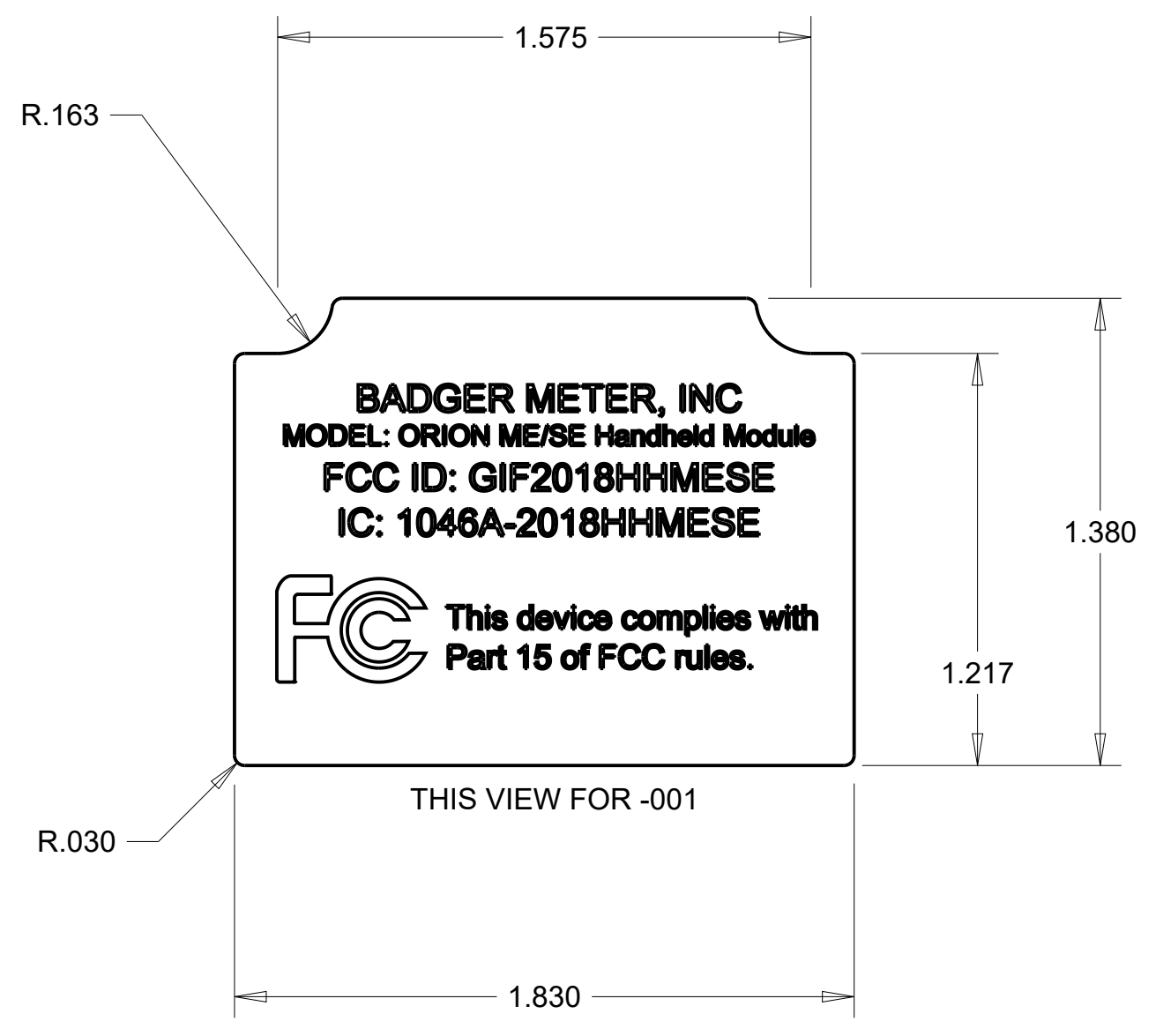


DRAWING #

68869



THIS VIEW FOR -002

NOTES:

- 1) MATERIAL: 0.005" POLYCARBONATE, LEXAN 8B35 VELVET/MATTE
- 2) ADHESIVE: 0.002" 3M 9172 PERMANENT ACRYLIC ADHESIVE
- 3) THE ARTWORK FILE IS THE MASTER. STANDARD TOLERANCE FOR THE DIMENSIONS SHOWN IS $\pm .030$.
- 4) PARTS SHALL BE SUPPLIED KISS-CUT ON A SHEET, STRIPS, OR ROLLS.
- 5) TEXT TO BE BLACK ON WHITE BACKGROUND.
- 6) BADGER LOGO TO BE PMS-300 BLUE ON WHITE BACKGROUND.

ADVANCE PRINT	
ER#	23502
ENG. JK	DATE: 04-19-18

AW-3782 ISSUE A	ORION CE	68869-002	1
AW-3781 ISSUE A	ORION ME/SE	68869-001	1
ARTWORK	MODEL	PART #	REV
Badger Meter		DRAWN	JK 04-19-18
		CHECKED	JK 04-20-18
		APPROVED	
PART NAME		SCALE	2.000
TRIMBLE MODULE FCC LABEL		SHEET	1 OF 1
MATERIAL		SHEET SIZE	C
		DRAWING #	ISSUE
PRODUCT LINE		EST WEIGHT	VOLUME
		68869	A1

CONFIDENTIAL	UNLESS OTHERWISE SPECIFIED
	ALL DIMENSIONS ARE IN INCHES [MM] DRAWING AND TOLERANCES PER ANSI Y14.1-2004 & Y14.5-2009 THIS DRAWING TO BE USED WITH CAD MODEL, WHEN SUPPLIED BY BADGER METER, FOR COMPLETE PRODUCT DEFINITION PER ANSI Y14.41-2003
VENDOR NOTE	TOLERANCE ON 4 PLACE DIMENSIONS $\pm .0025$ [.0635]
	TOLERANCE ON 3 PLACE DIMENSIONS $\pm .005$ [.127]
	TOLERANCE ON 2 PLACE DIMENSIONS $\pm .01$ [.25]
	TOLERANCE ON ANGULAR DIMENSIONS $\pm 0.5^\circ$
	REMOVE ALL BURRS R.005 MAX OR .005 x 45°
	MACHINED SURFACES FINISH - 125 μ INCHES OR BETTER

A